

Hardware/Components



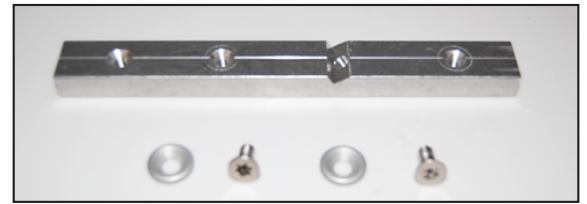
Double Sided Extrusion



Support Extrusion



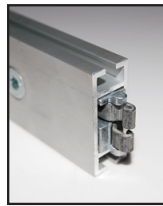
T-30 Torx Key



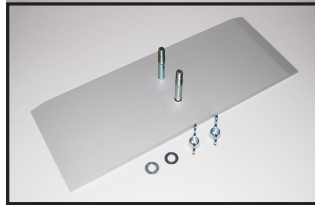
In line Connector



Corner Bracket



Support Connector



Base Plate

Tip:

Remove all parts from the shipping materials and take an inventory to make sure you have everything needed. There is a parts list on your frame rendering.

1. Linking Extrusions



For larger frames that require an in line connector: join top pieces of the frame using the in line connector, torx screws and concave washers; repeat for bottom and sides. Tighten torx screws with the supplied T-30 torx key.

2. Corner Connectors



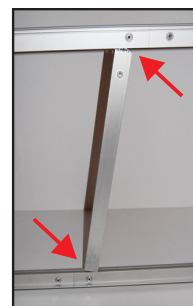
Slide corner brackets into the left and right side of the top and bottom extrusion and tighten the torx screws using the T-30 torx key.



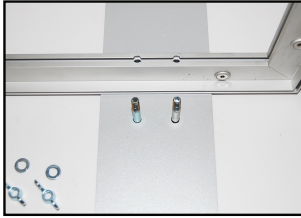
Now slide the other end of your corner brackets into the side extrusions and tighten the torx screws. You should now have your frame ready to mount to the base plates.

3. Set-up for Support Extrusion

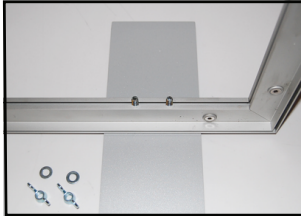
For larger frames that require support extrusion: (locks will be shipped already installed) Find where your supports should be placed (refer to frame rendering for approx. placement) and insert the lock ends into the channel. It may require a slight nudge to get it to stand vertical. Tighten the torx screws using the T-30 torx key.



4. Installation of Base Plate:



First insert the mounting bolt through the bottom of the base plate.



Slide the rest of the mounting bolt through the predrilled hole in the bottom extrusion.



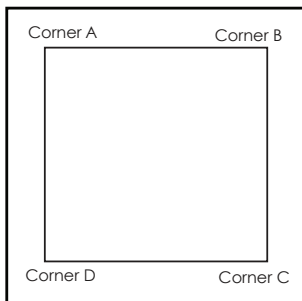
Install washer and wing nut and tighten. Repeat process as necessary.

5. Frame installation complete



The frame is now ready for you to install the graphic.

6. Installation/Removal of graphic



It is important to first insert graphic into each alternate corner then to the sides of the frame. If this is not done, graphic will not fit into the frame correctly.



Step 1

Insert corner A. Turn edge of graphic so silicon welt is perpendicular to face of graphic. Insert narrow side of welt with fabric to outside into the channel. Repeat for other side of this corner.



Step 2

Repeat Step 1 for opposite corner B, then insert corner C, followed by corner D, to complete the installation of the corners.

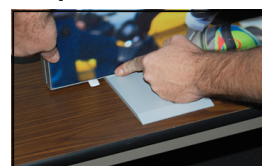


Step 3

Once all corners are inserted, press one silicon edge into channel from corners and work toward the center. Make sure welt is fully inserted into channel. Continue until all sides are done. Smooth out edges of graphic.



Graphic Removal



To remove the graphic from the frame, locate the fabric pull tab. Gently pull up on the tab to remove the fabric.