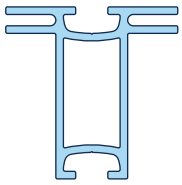
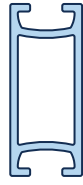


### Hardware/Components



Double Sided Extrusion



Support Extrusion



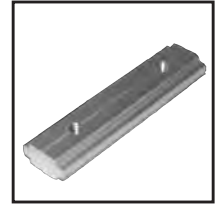
Support Extrusion w/lock installed



Hex Keys w/Case



In Line Connector



Channel Connector for Lateral Feet



Mitre Connector



12" Corner Brace



Lateral Foot



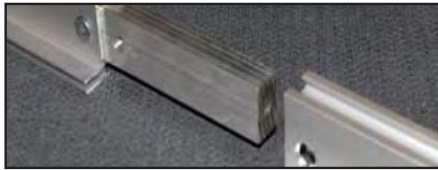
Round Base



Oval Base

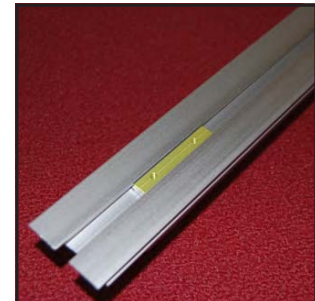
**Tip:** Remove all parts from the shipping materials and take an inventory to make sure you have everything needed. There is a parts list on your frame rendering.

### 1. Linking Extrusions



**For larger frames that require an in line connector:** join top pieces of the frame using the in line connector, repeat for bottom and sides. Tighten using the 4 mm hex key.

### 2. Set-up for Lateral Feet



**For frames that require Lateral Feet - (side mounted):**

You will need to insert the lateral feet bracket into the side frame channels before assembling the four sides of your frame. (Shown highlighted above.)

### 4. Set-up for Support Extrusion



**For larger frames that require support extrusion:**

(locks will be shipped already installed) Find where your supports should be placed (refer to frame rendering for approx. placement) and insert the lock ends into the channel. It may require a slight nudge to get it to stand vertical. Tighten the hex cap screws using the 5mm hex key.

### 3. Corner Connectors



Insert the Mitre Connector into both sides of the top and bottom extrusion. Insert the top and bottom extrusion into the left

and right sides and tighten the screws using the 3mm hex key.

## 4. Set-up for Support Extrusion, cont.



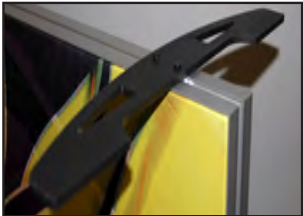
**For larger frames that require support extrusion:**  
(locks will be shipped already installed)  
Insert 12" support bar into the channel of the frame and tighten the hex cap screws using the 5mm hex key.



## 5. Installation of Lateral Feet:



Feet brackets should have already been installed in Step 2.



Loosely attach the Lateral Feet to the bracket.



Stand the frame in position and slide foot down until it touches the floor. Tighten screws using the 2.5 mm hex key.

## 6. Installation of Round or Oval Base:



First insert the mounting bolt through the bottom of the base plate.

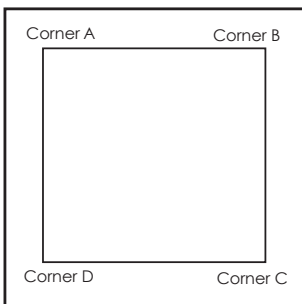


Slide the rest of the mounting bolt through the pre-drilled hole in the bottom extrusion.



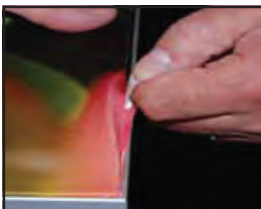
Install washer and wing nut and tighten. Repeat process as necessary.

## 7. Installation and Removal of graphic



**It is important to first insert graphic into each alternate corner then to the sides of the frame. If this is not done, graphic will not fit into the frame correctly.**

### Graphic Removal



To remove the graphic from the frame, locate the fabric pull tab. Gently pull up on the tab to remove the fabric.



### Step 1

Insert corner A. Turn edge of graphic so silicon welt is perpendicular to face of graphic. Insert narrow side of welt with fabric to outside into the channel. Repeat for other side of this corner.



### Step 2

Repeat Step 1 for opposite corner C, then insert corner B, followed by corner D, to complete the installation of the corners.



### Step 3

Once all corners are inserted, press one silicon edge into channel from corners and work toward the center. Make sure welt is fully inserted into channel. Continue until all sides are done. Smooth out edges of graphic.