

Wet Method Application

(*Recommended for non-professionals)

Please review the General Instructions and this Method before applying the film.

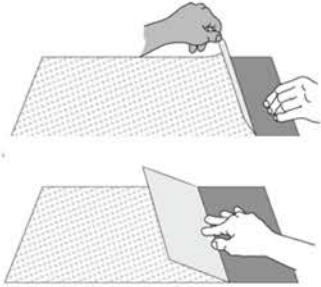
1

Clean and wipe the window or substrate, removing dust and any obvious contaminants. We recommend isopropyl alcohol or heptane.



2

Lay the graphic image side down on a flat surface. Pull back about 6 inches of the liner. Sharply crease the liner.



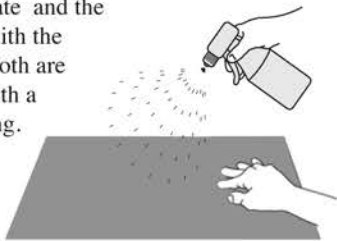
3

Mix 3-5 drops of "Dove" Liquid dish soap with one qt. water in a spray bottle. Shake the spray bottle to dissolve the liquid dishwashing soap.



4

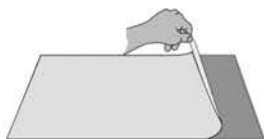
Spray both, the substrate and the back of the graphics with the soap/water mix until both are thoroughly covered with a light to medium misting.



5

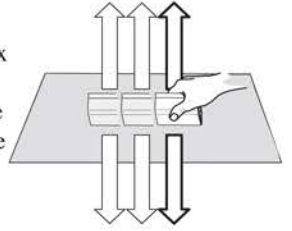
Lower the graphics onto the substrate and gently align the graphics in place with your hand, starting from the one edge. Once the edge is in alignment, slowly work towards the opposite edge.

Try to avoid scooting the graphic around, but lift the graphic up, if need be.



6

Use the rubber squeegee to press out the soap/water mix from under the graphics. Work the squeegee from the center of each graphic to the outside. If you do not have a squeegee, a plastic credit card will work.



7

Spray the soapy mixture over the tape that is secured to the graphic. This will help to release the adhesive, making it easier to remove. Squeegee the tape. Slowly remove the masking tape.



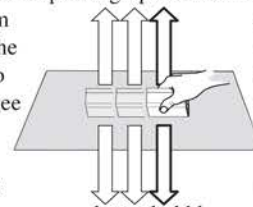
8

Watch for tips and edges of graphics that may stay adhered to the paper mask. If this occurs, use the rubber squeegee or your fingernail to push the tip or edge back onto the substrate, working from the paper mask side. Never touch the sensitive side of the graphics, as oil from your fingers may interfere with adhesion.



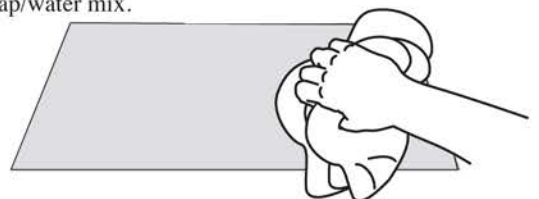
9

Press down the exposed graphics with the rubber squeegee, working from the center of the graphics to the outside edge. Be careful not to damage the graphic. If the squeegee does not easily move over the graphic, lightly spray the solution once more. Use the rubber squeegee to push any bubbles out the nearest edge.



10

Wipe off the graphics with a lint-free rag to remove the soap/water mix.



Dry Method Application

(*Expert Level of Application)

Please review the General Instructions and this Method before applying the film.

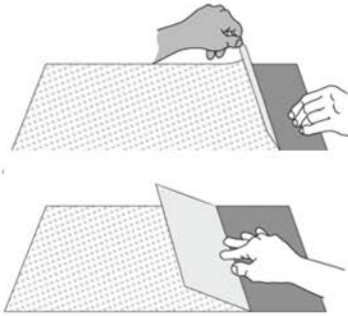
1

Clean and wipe the window, removing dust and any obvious contaminants.



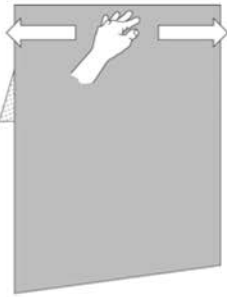
2

Lay the graphic (image side down) on a flat surface. Pull back about 6 inches of the liner. Sharply crease the liner.



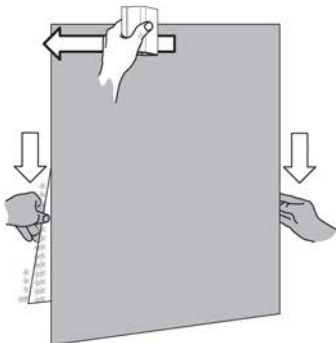
3

Align the graphic on the window and use finger pressure to tack it in place.



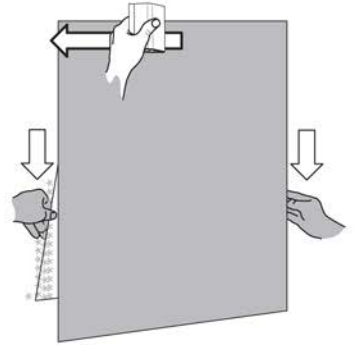
4

Stroke from the center to the right edge.



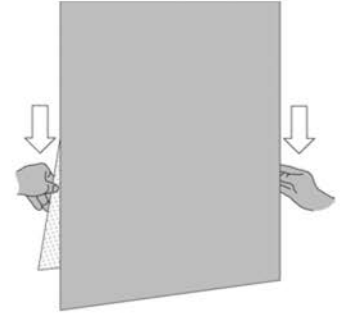
5

Return to the center and stroke to the left edge.



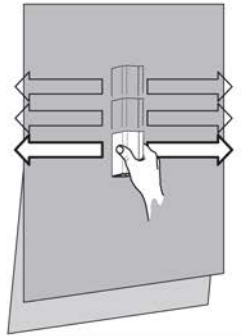
6

Pull the liner down as needed, using two hands.



7

Move the squeegee down a couple of inches and continue stroking right and left, pulling the liner down as needed. Repeat to the bottom.



8

Re-stroke the outer 3 inches of the entire graphic to ensure good edge adhesion.

