

Product Setup Instructions

Twist Original (all heights and widths) •

Twist Media (all heights and widths) •

Flexi link (all heights) •

Twist Counter Wrap •

Double Hardcase Wrap •

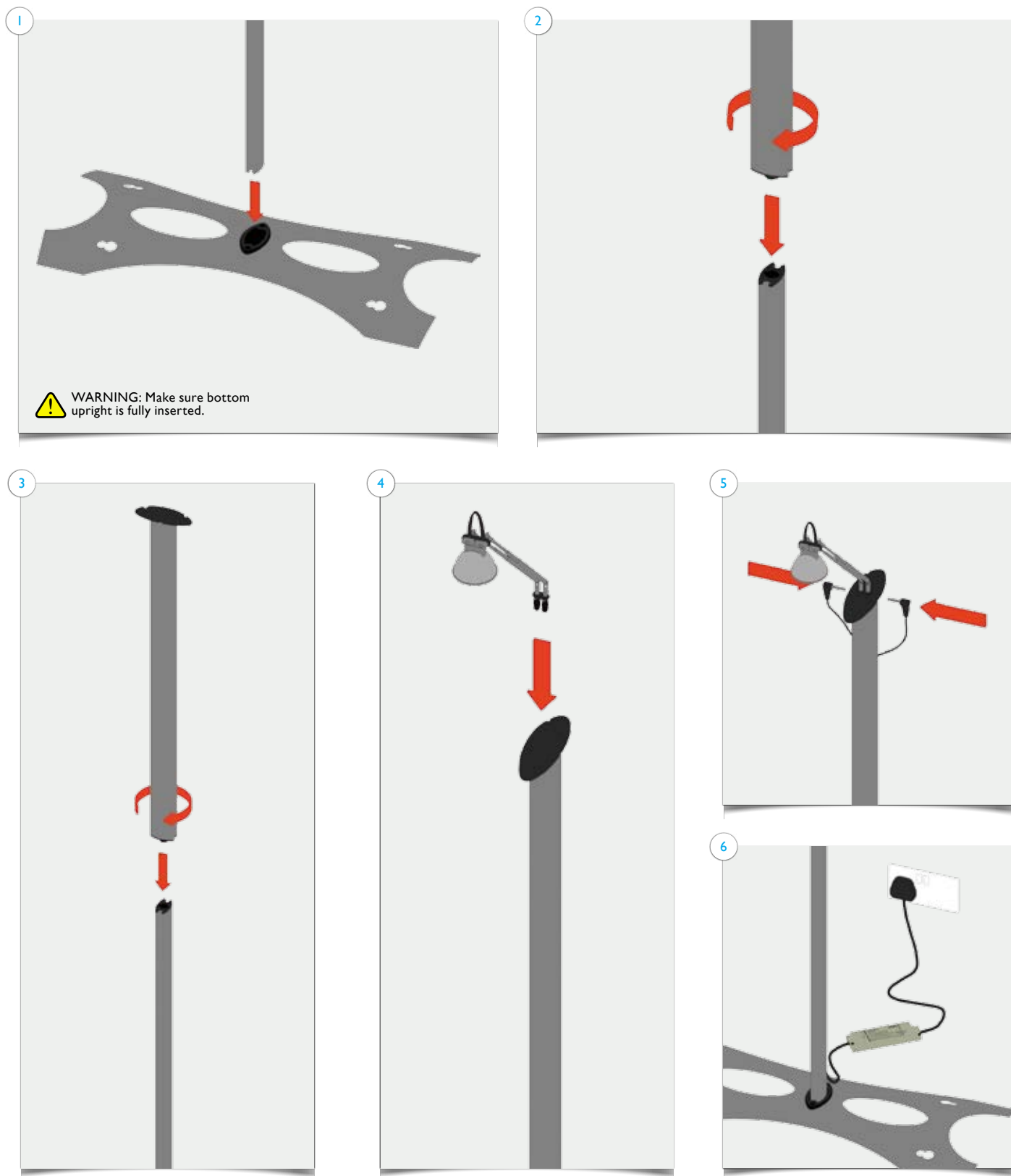
Single Hardcase Wrap •

Flat End Cap (all heights) •




Items

1x base with rubber grommet; 1x bottom upright section; 1x middle upright section; 1x top upright section; 1x light; 1x transformer; 1x graphic panel with finishing strips.

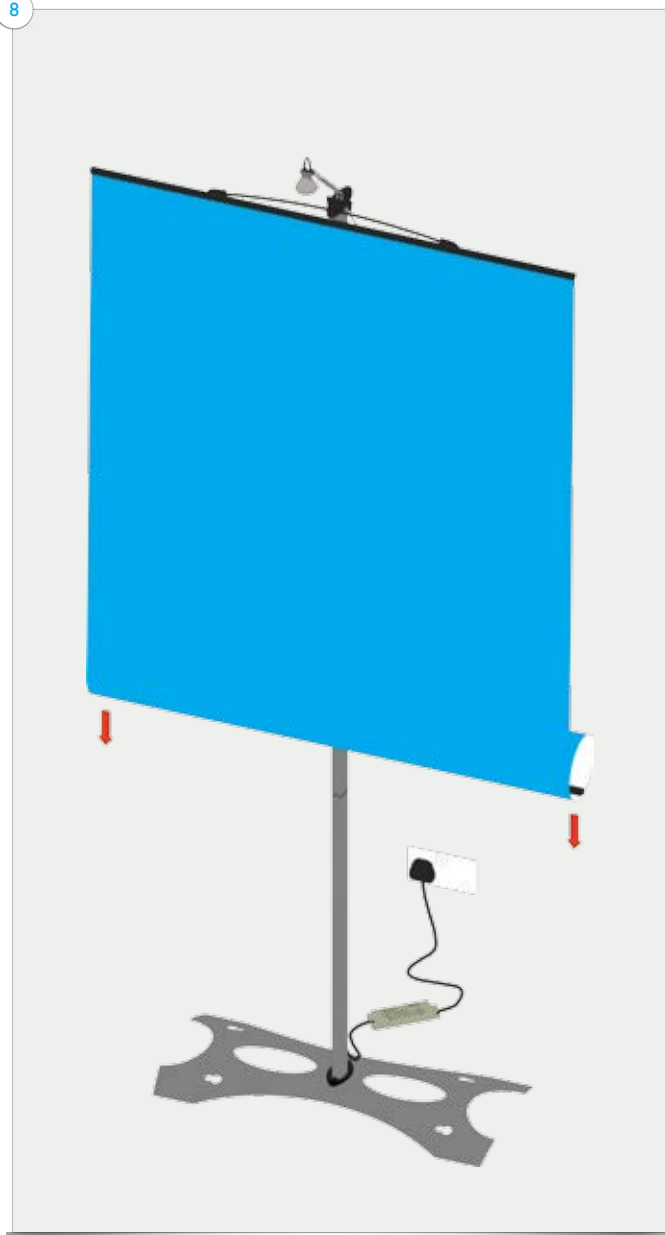


Part2
Twist Original Setup Instructions

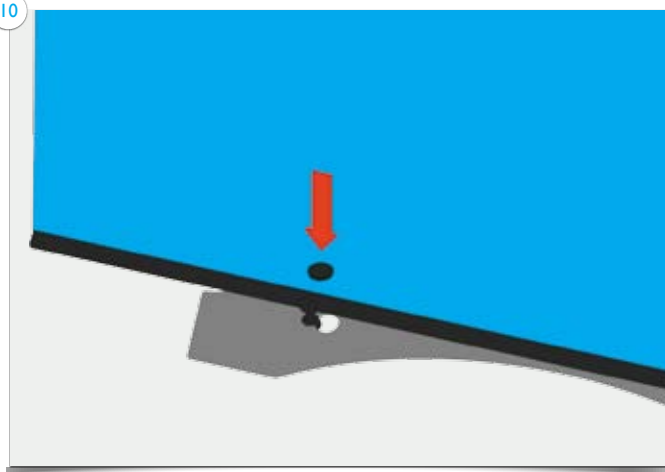


 **WARNING:** Make sure bottom upright is fully inserted. Twist the upright sections clockwise to lock, anti-clockwise to open – do not force.

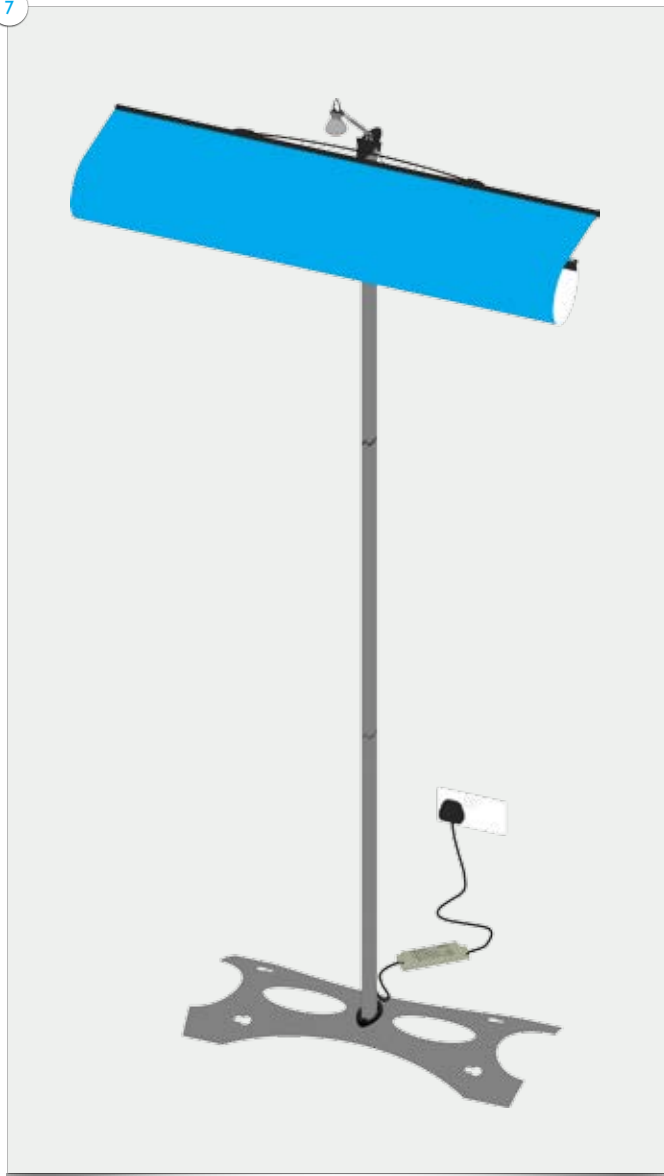
8



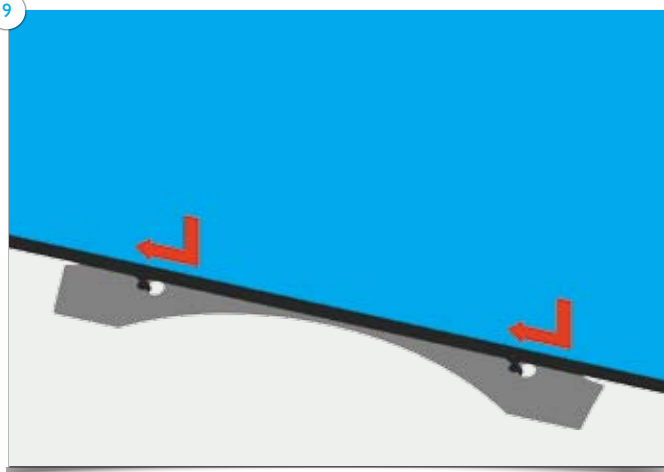
10



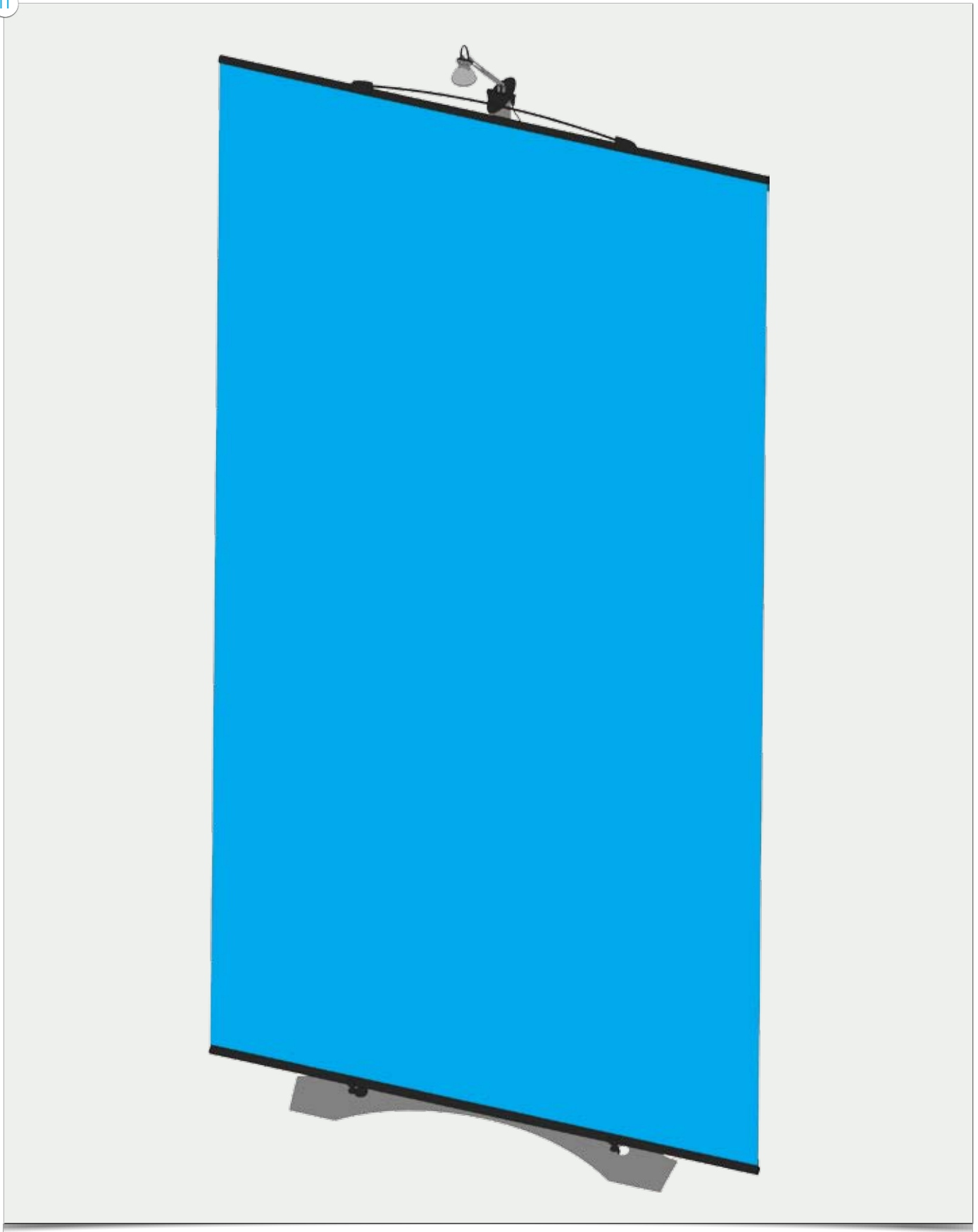
7



9

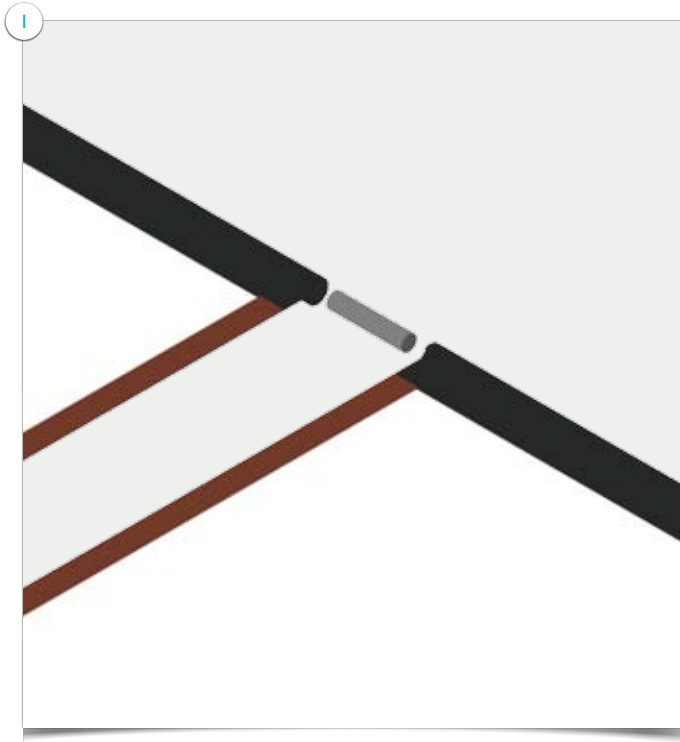


11

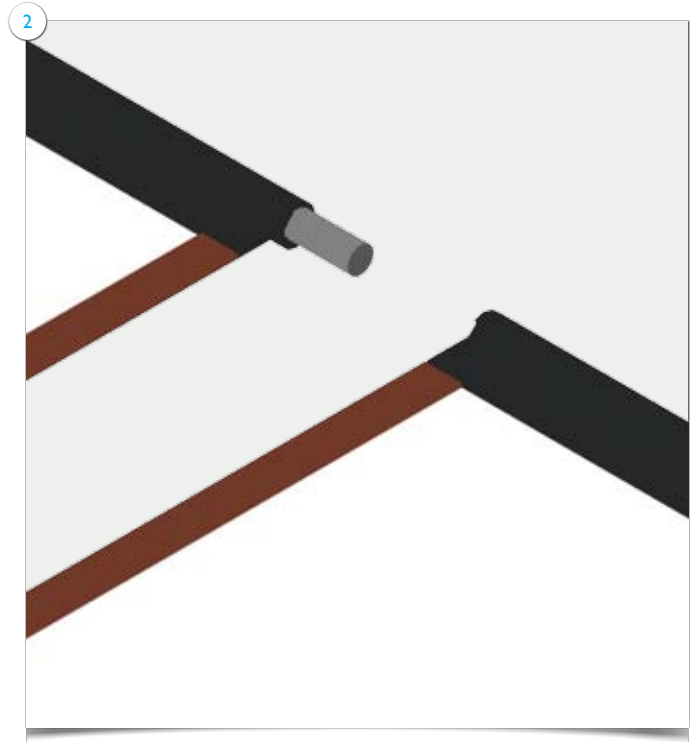


Items

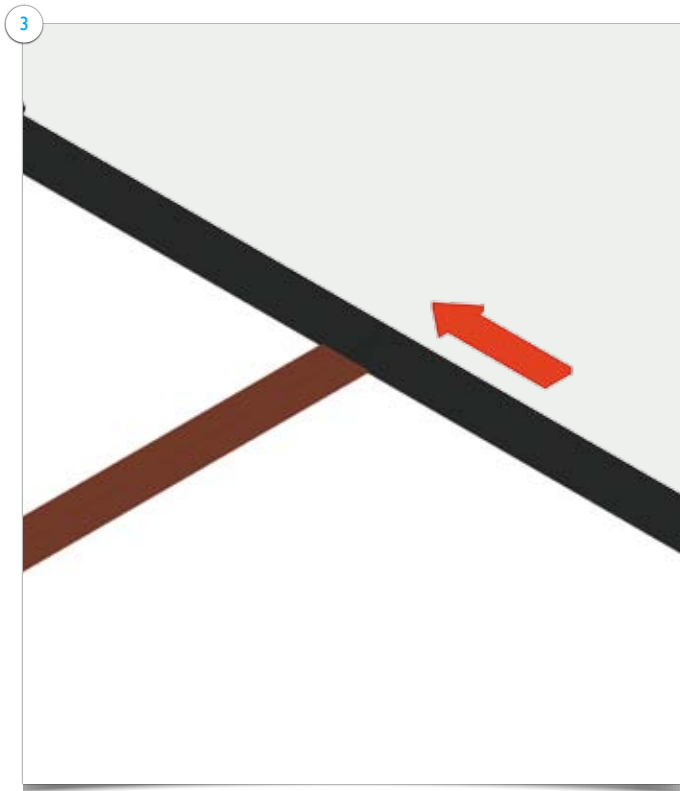
Items: 2x linking pins, 3x magnetic bars, complete **Twist** stands.



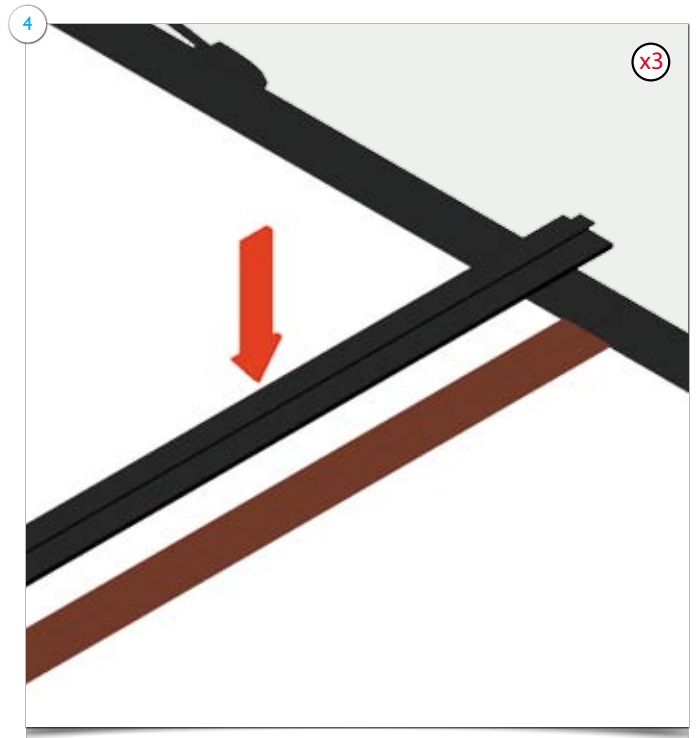
1. Place assembled **Twist** stands next to each other.



2. Place linking pins in top and bottom finishing strips.

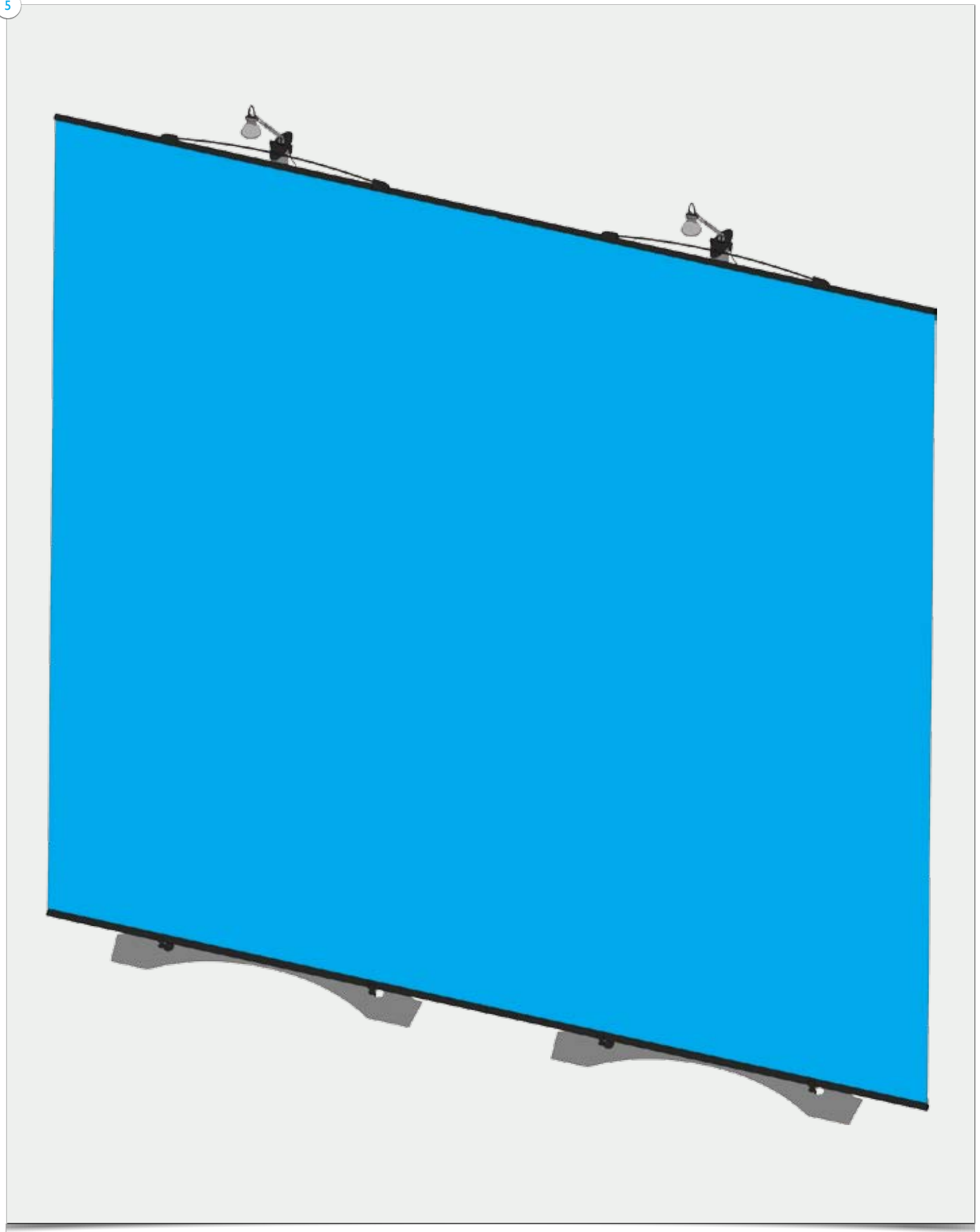


3. Link the two together and apply magnetic bars to magnetic tape on reverse of graphic panel.



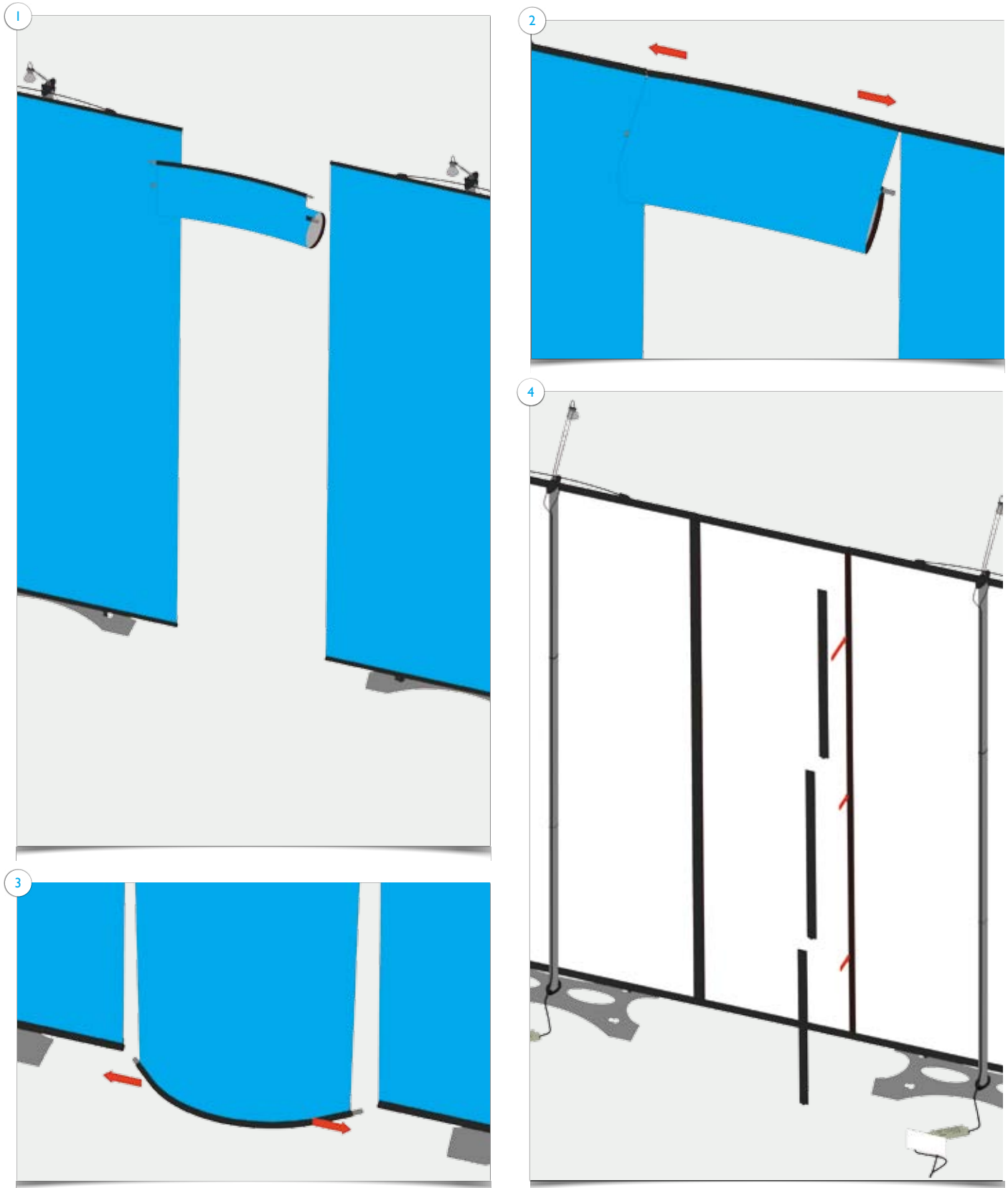
4. If graphic requires aligning, stand in front of **Twist** stands and place your finger at the bottom of the panel at the join, lift the lower graphic upwards to align graphics taking any slack to the top.

5

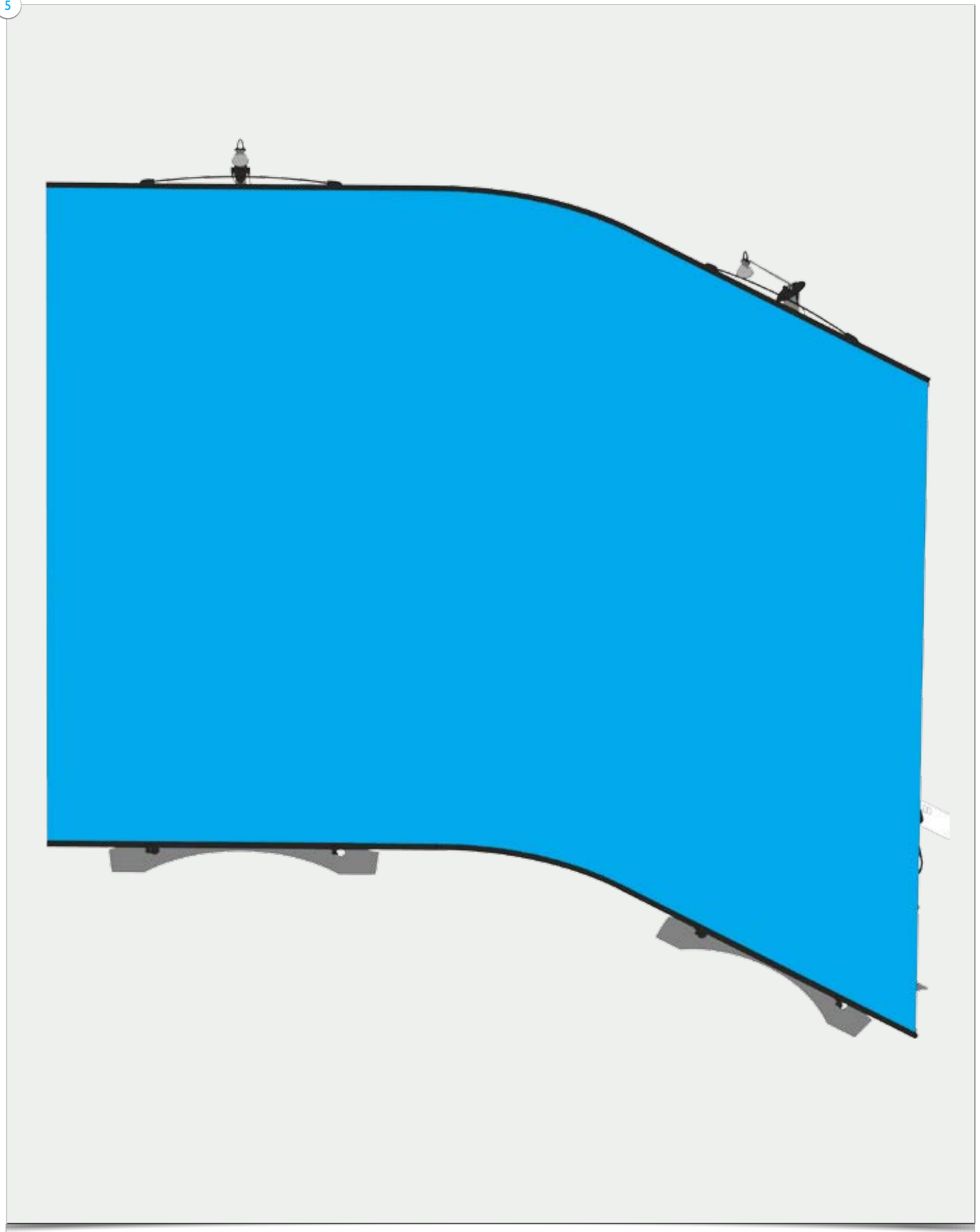


Items

Items: 6x magnetic bars, flexilink graphic panel, complete **Twist** stands.

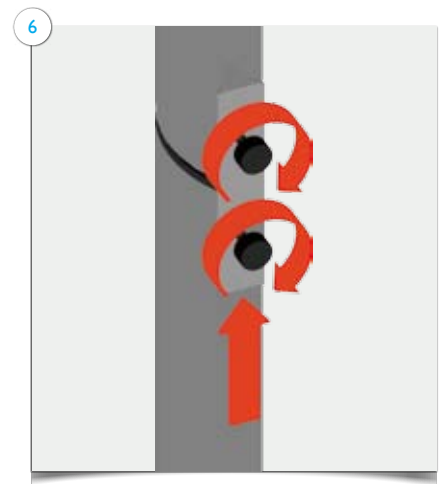
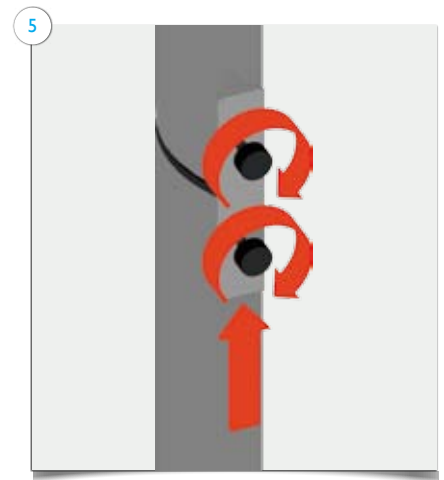
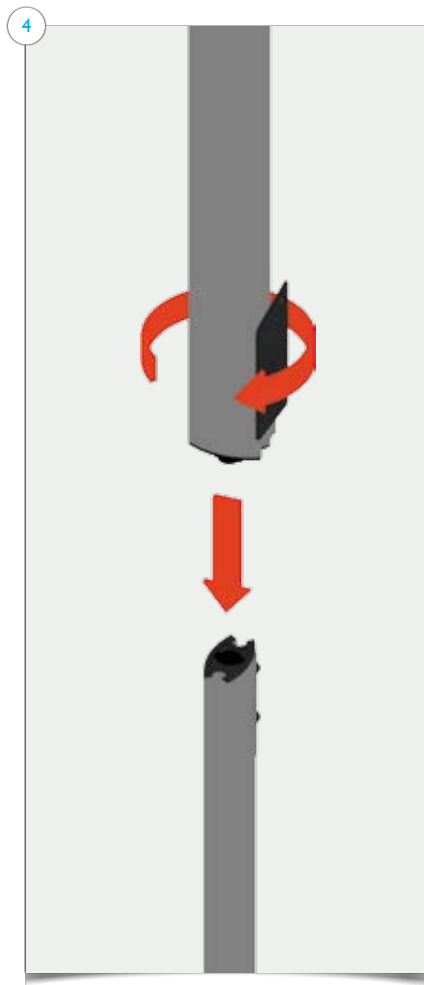
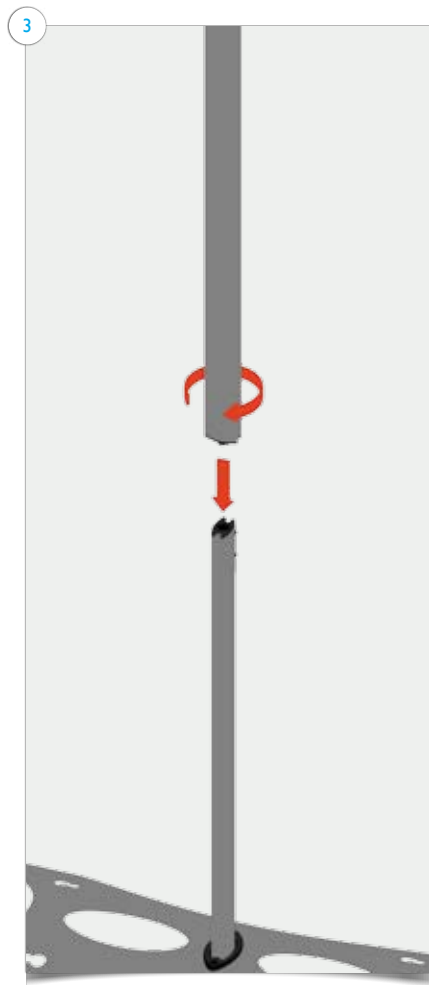
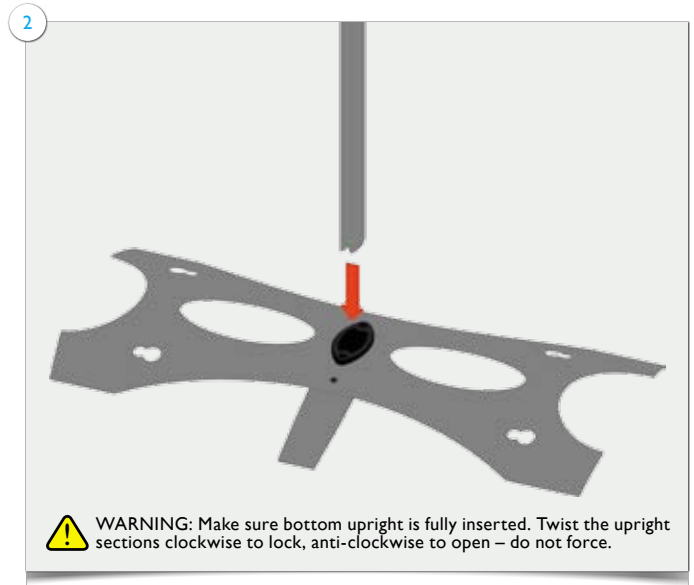
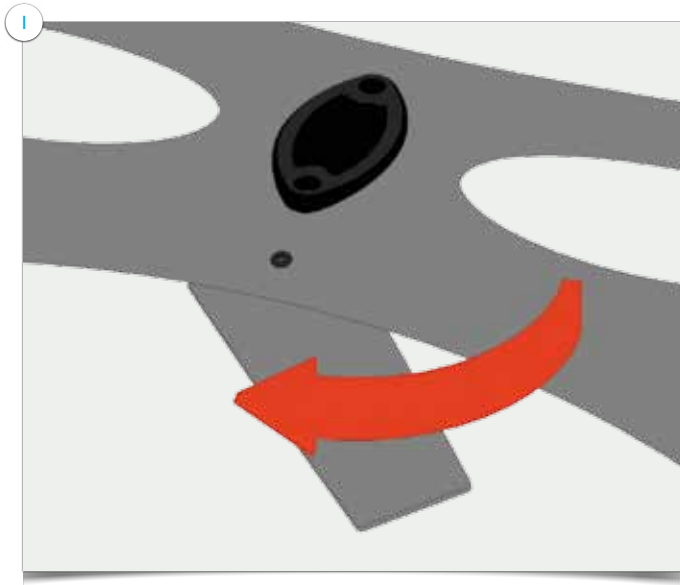


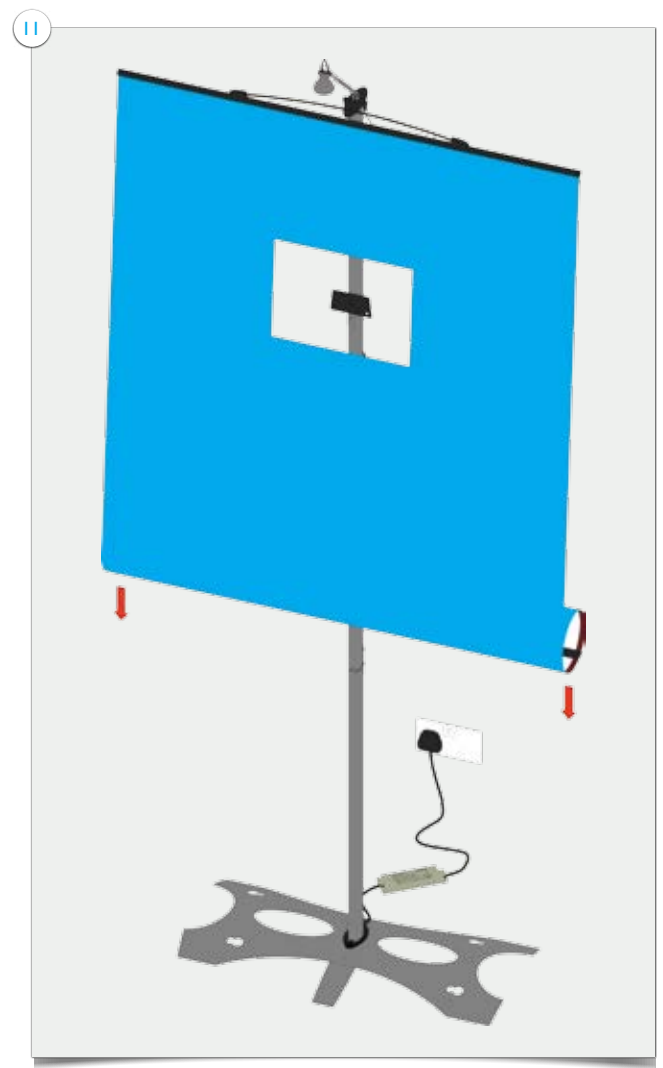
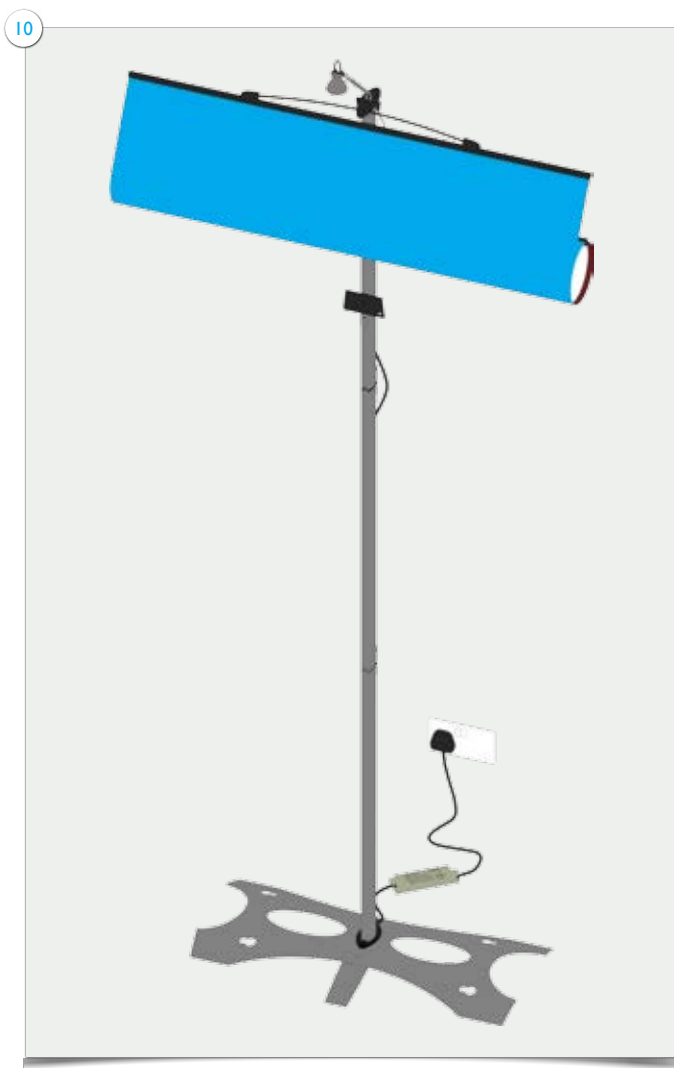
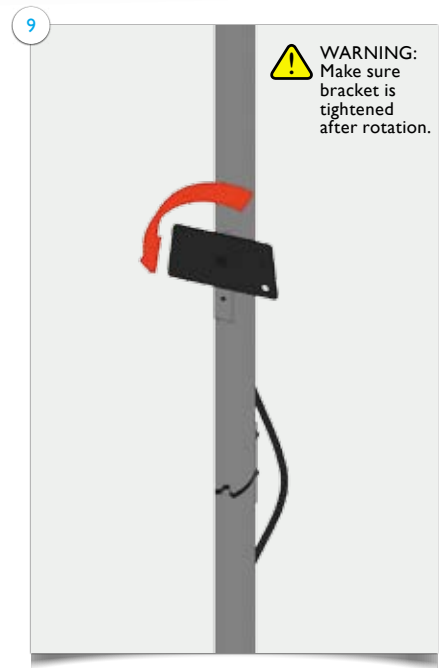
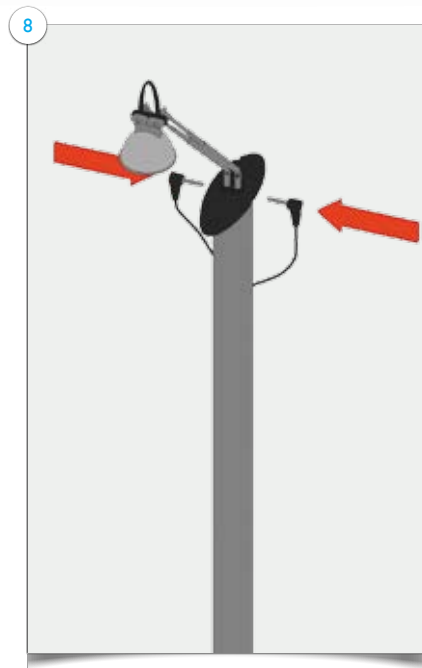
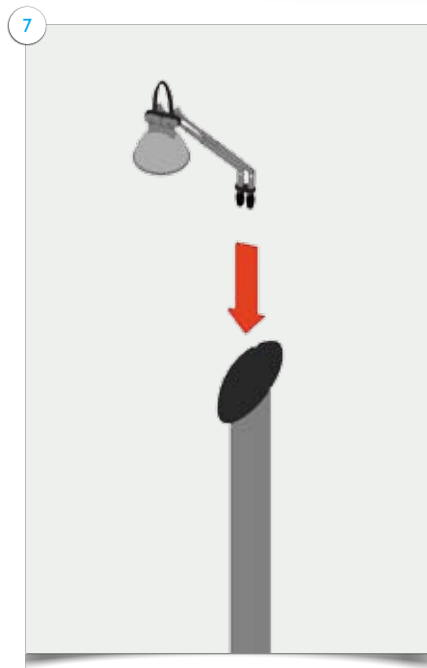
5

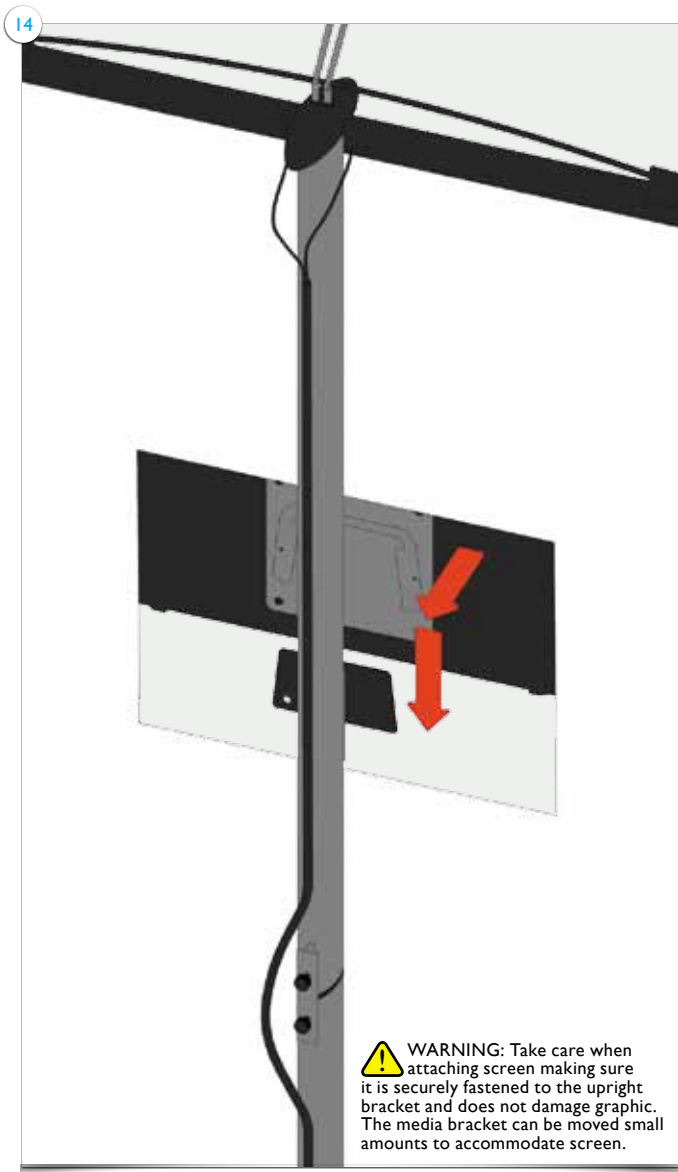
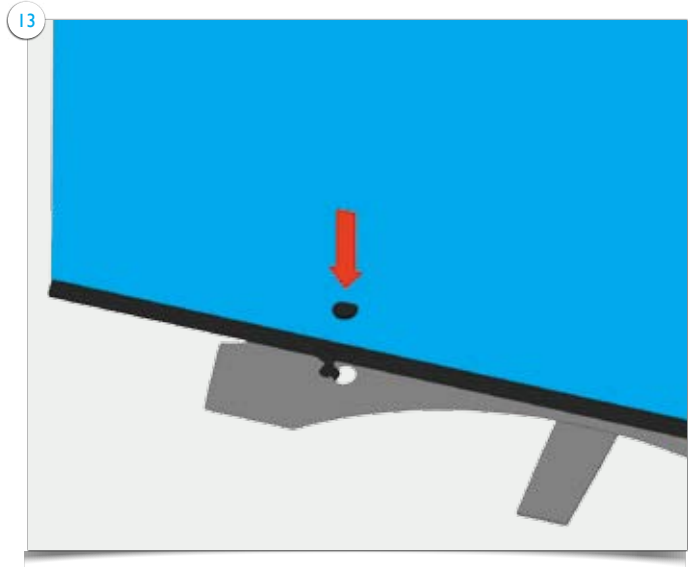
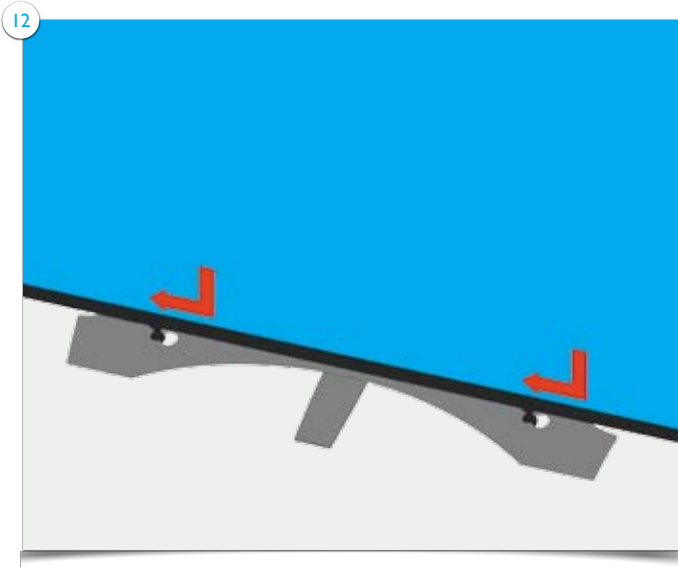


Items

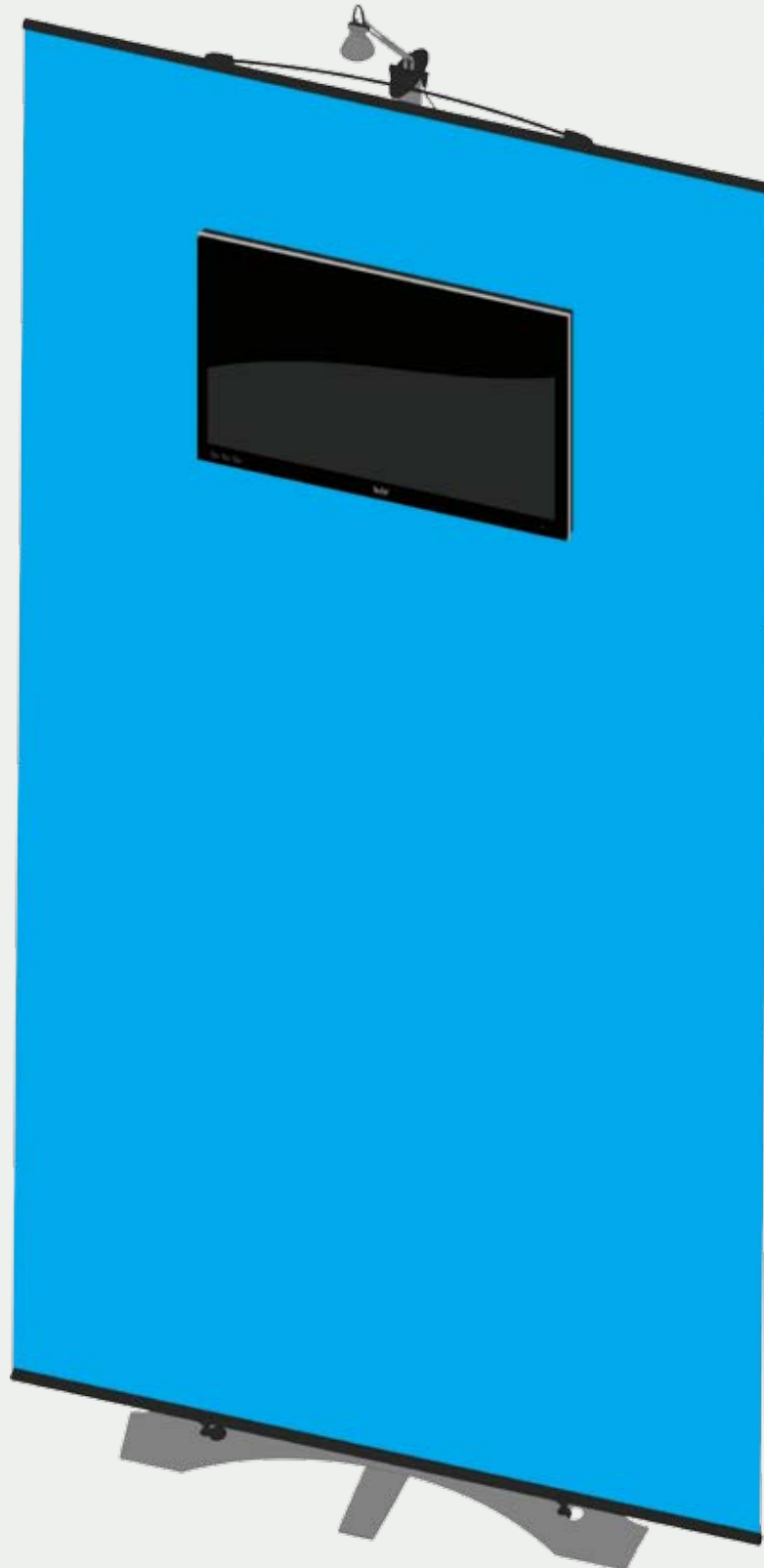
Items: 1x base with stabilizing foot and grommet; 1x bottom upright section; 1x middle upright section; 1x top upright section with media bracket; 1x light; 1x transformer; 1x graphic panel with finishing strips; 2x locking pins; 1x VESA monitor mount; 4x screws; 1x Allen key.





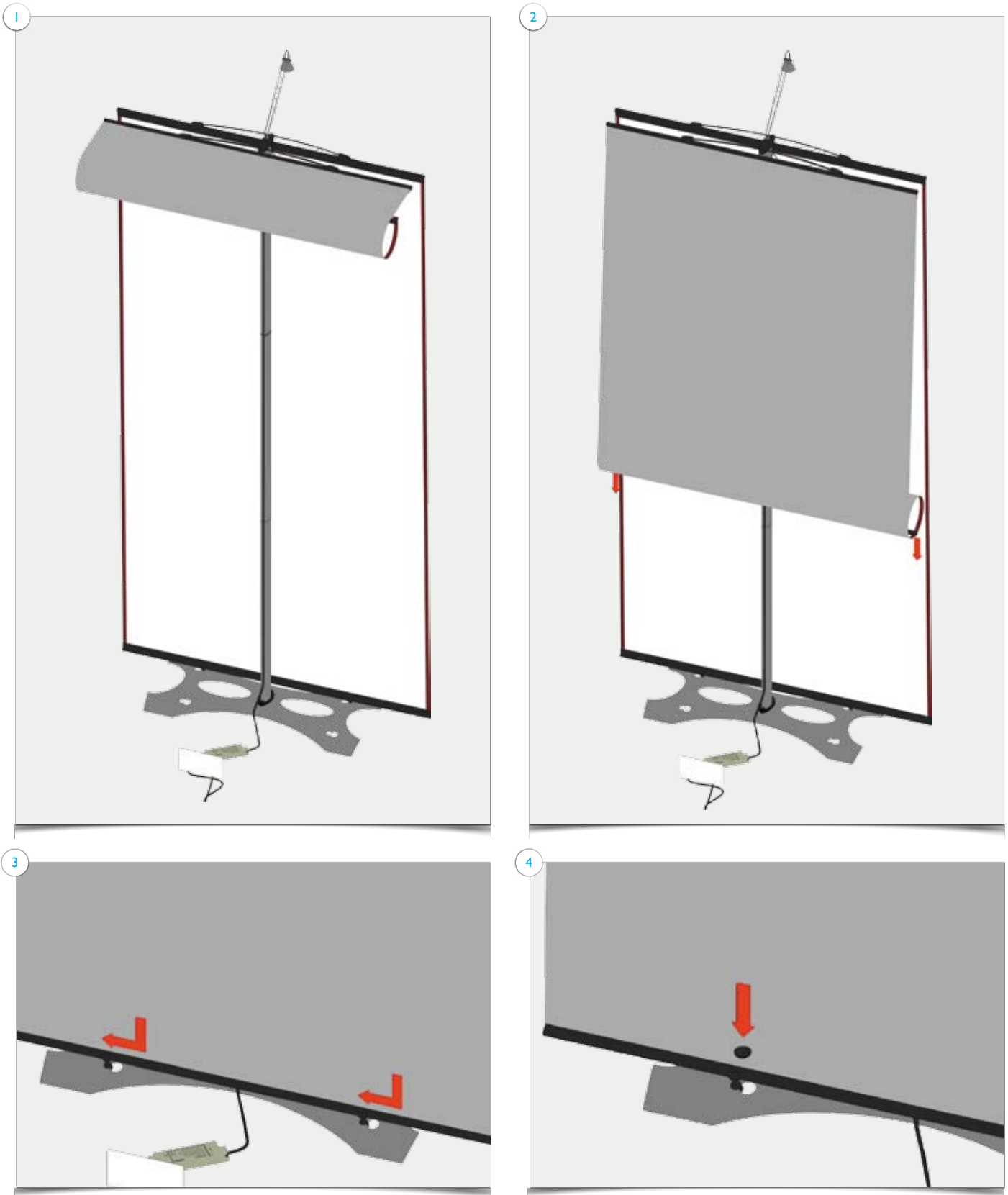


16



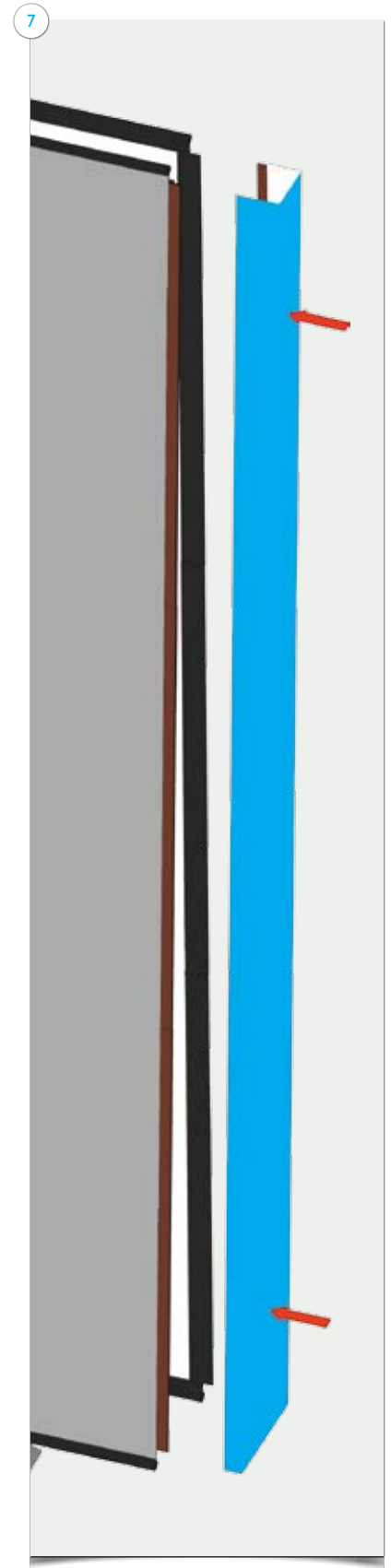
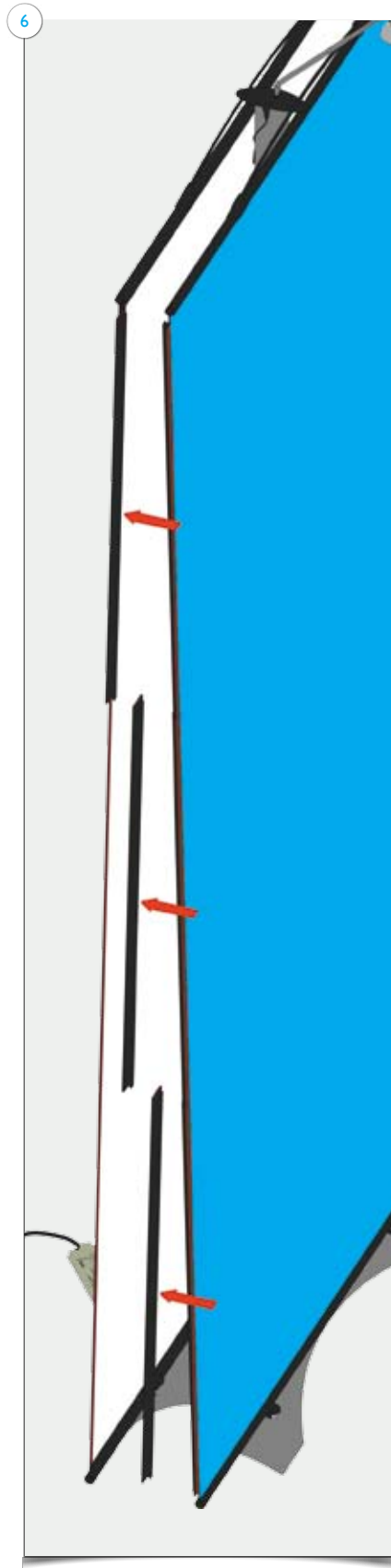
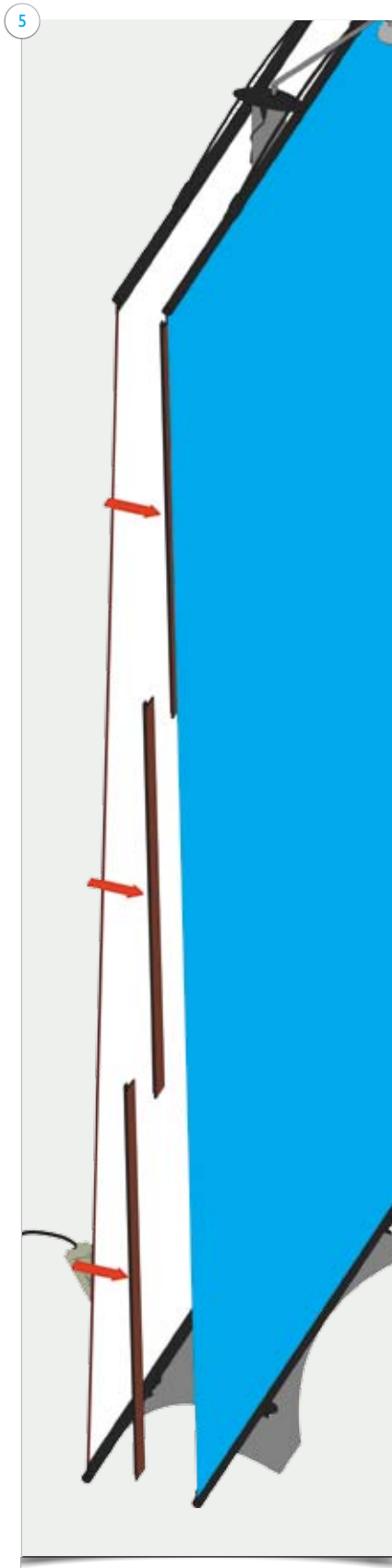
Items

Items: 6x magnetic bars, endcap graphic panel, complete double sided **Twist** stand.

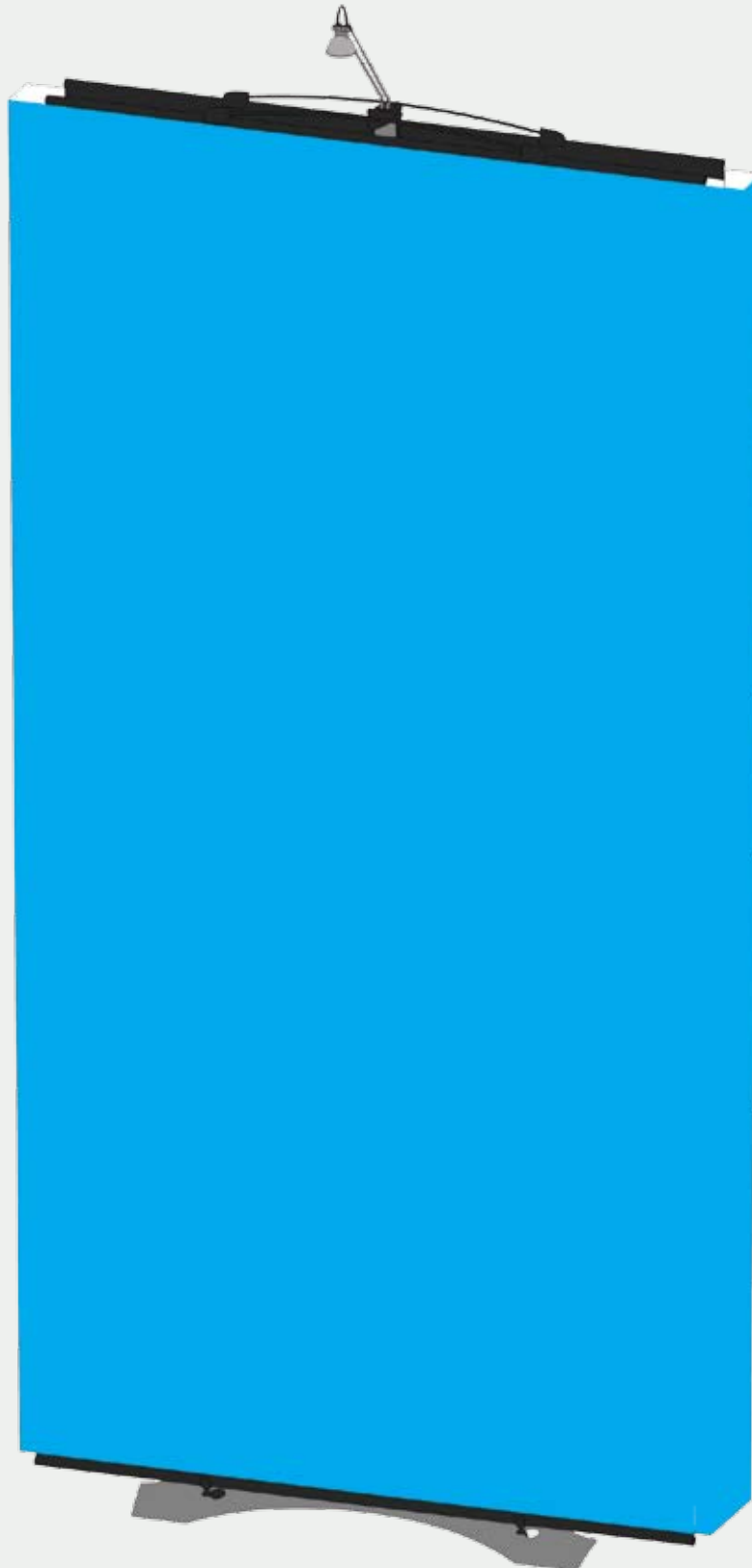


Part2
Flat End Cap Setup Instructions

Attach magnetic bars to **Twist** graphics first, leaving half of magnetic bar showing.

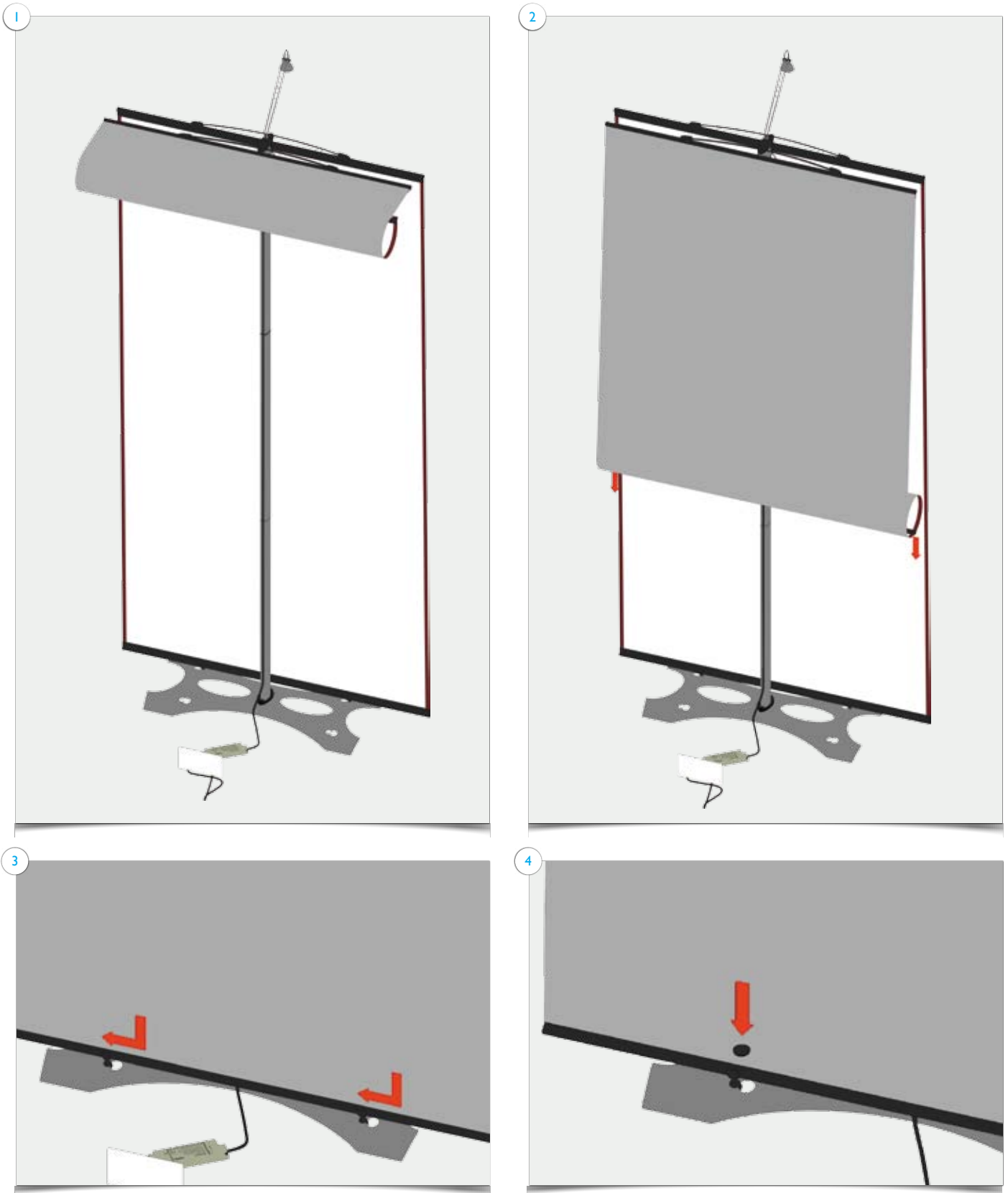


8



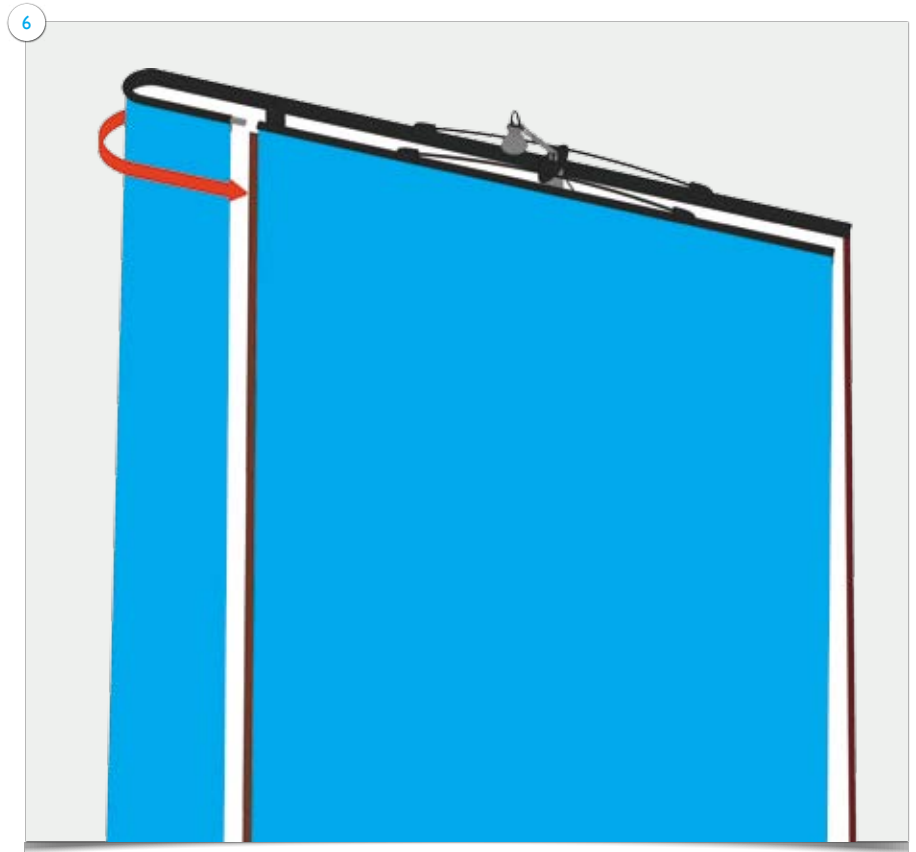
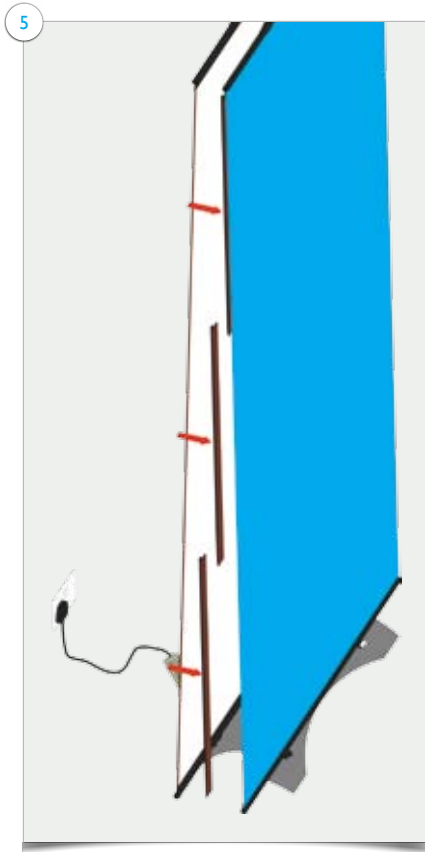
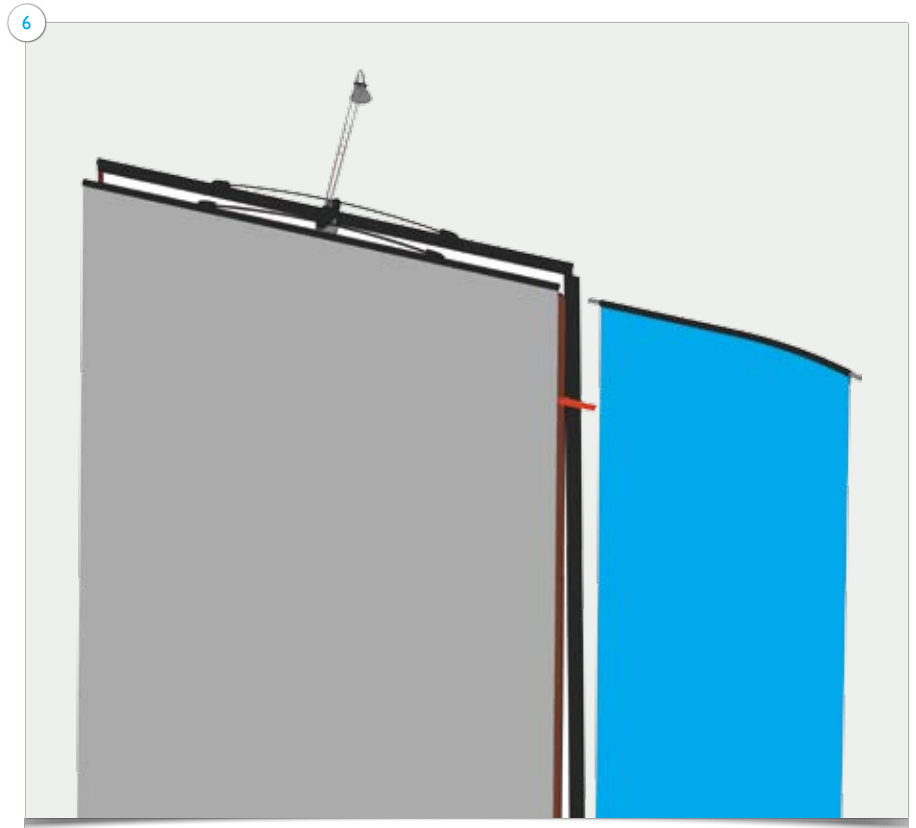
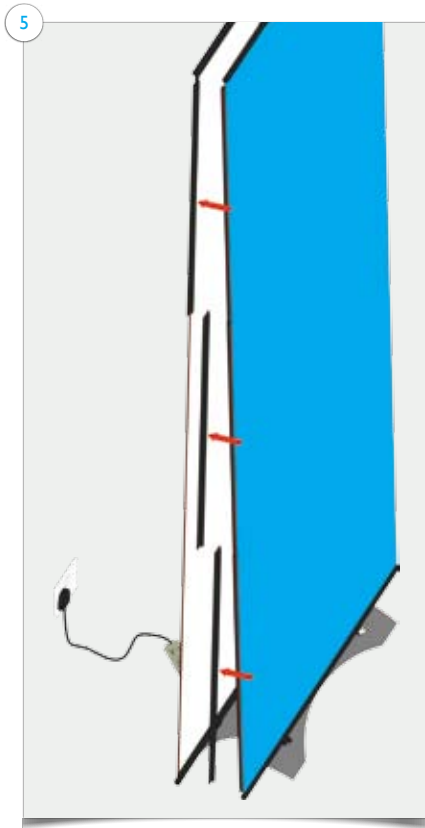
Items

Items: 6x magnetic bars, endcap graphic panel, complete double sided **Twist** stand.

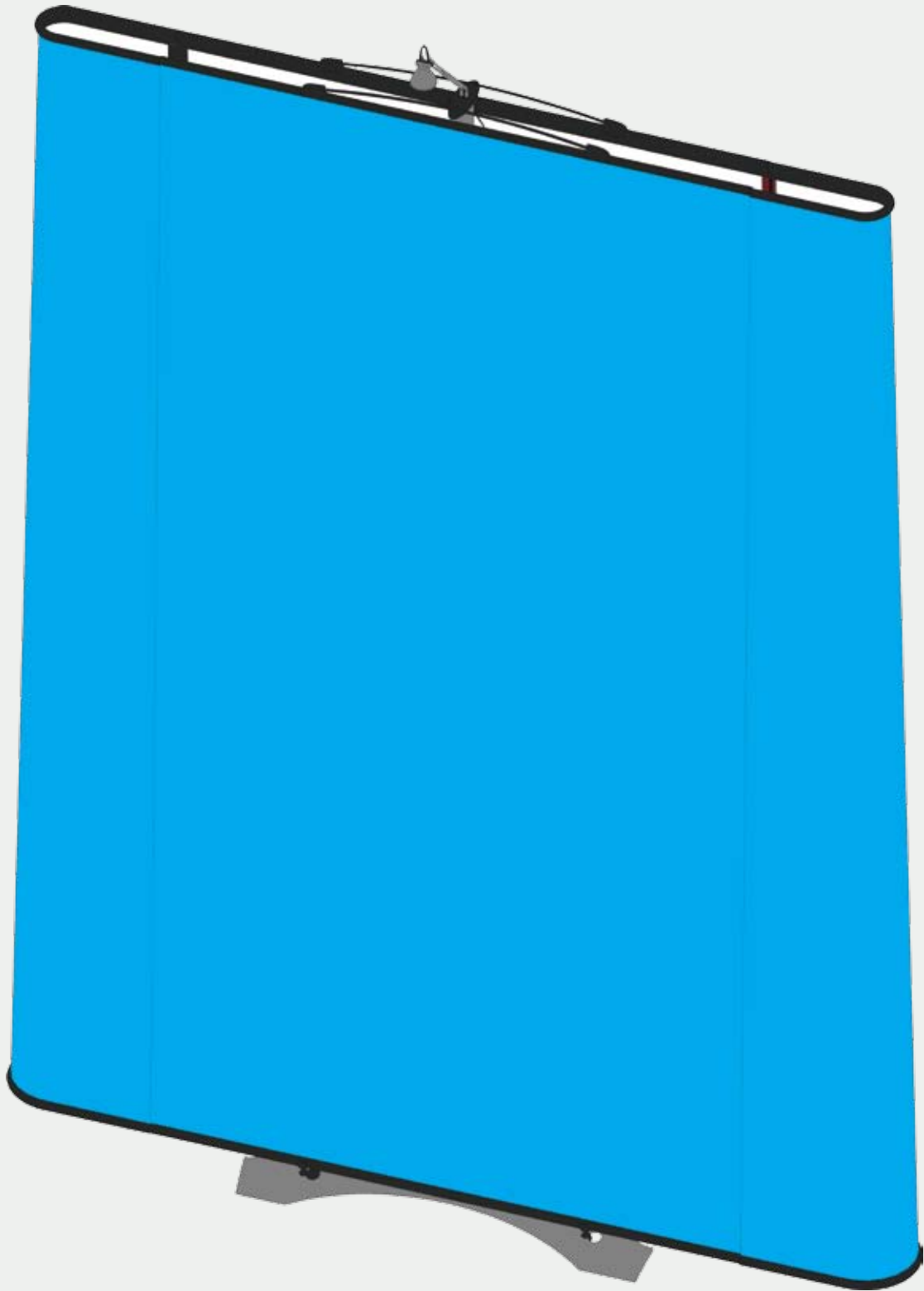


Part2
Curved End Cap Setup Instructions

Attach magnetic bars to **Twist** graphics first, leaving half of magnetic bar showing.

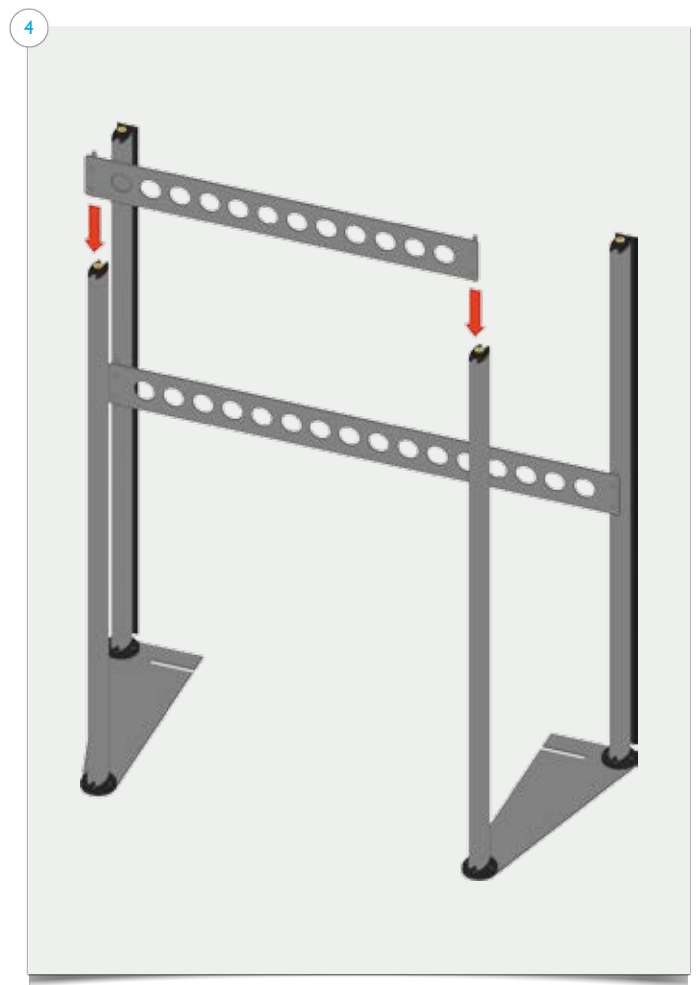
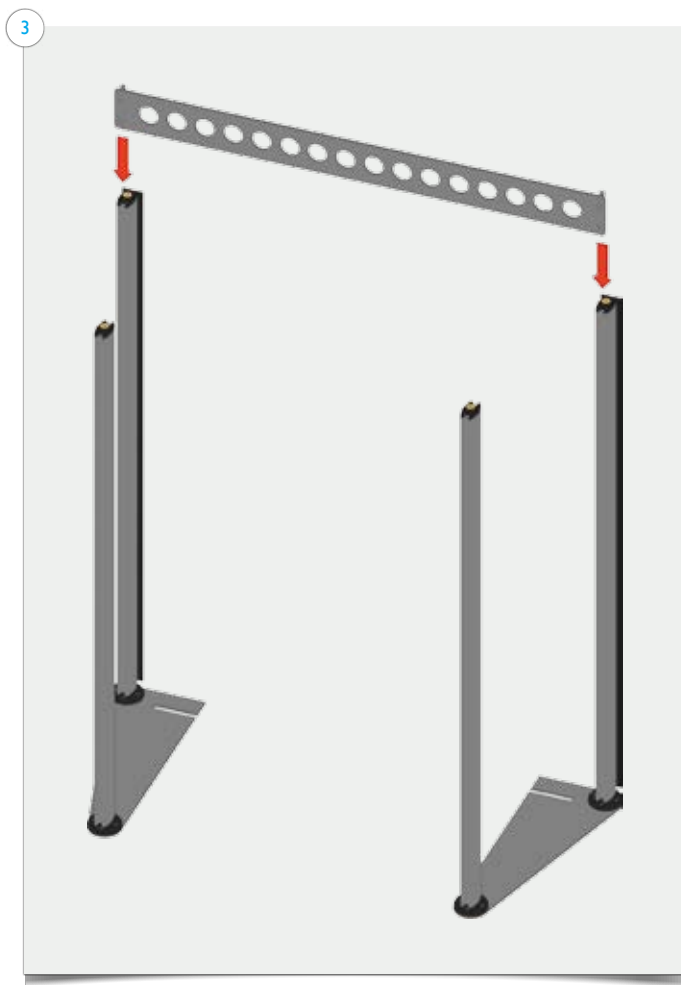
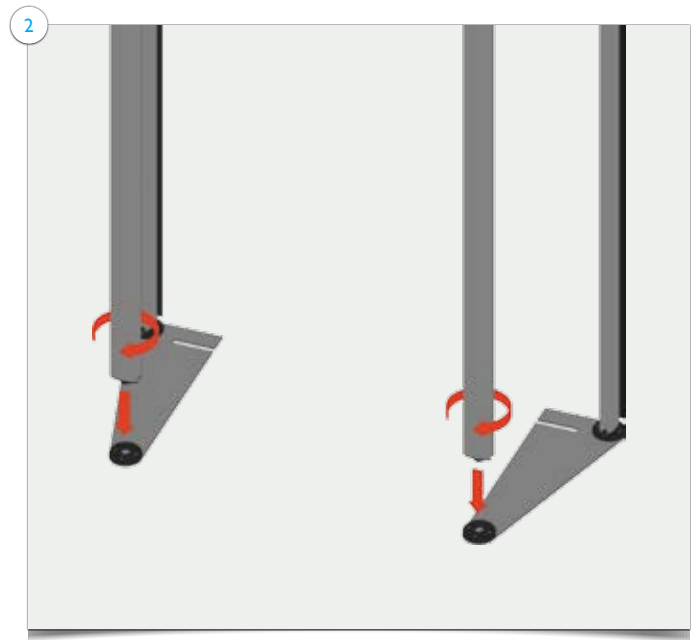
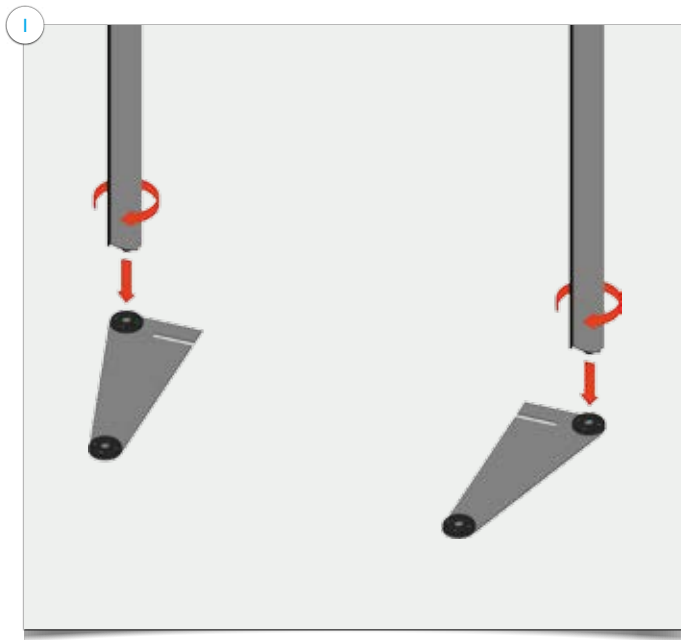


8

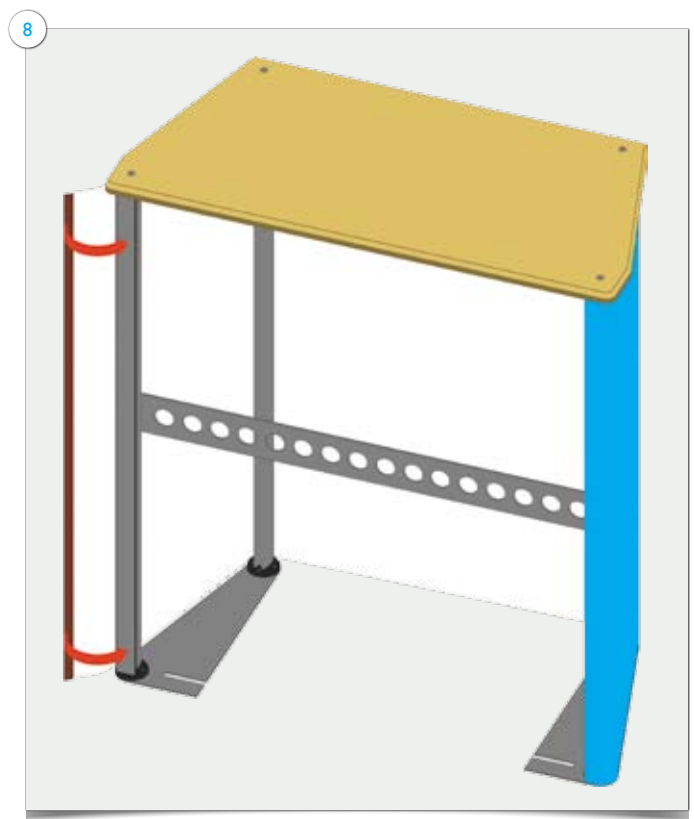
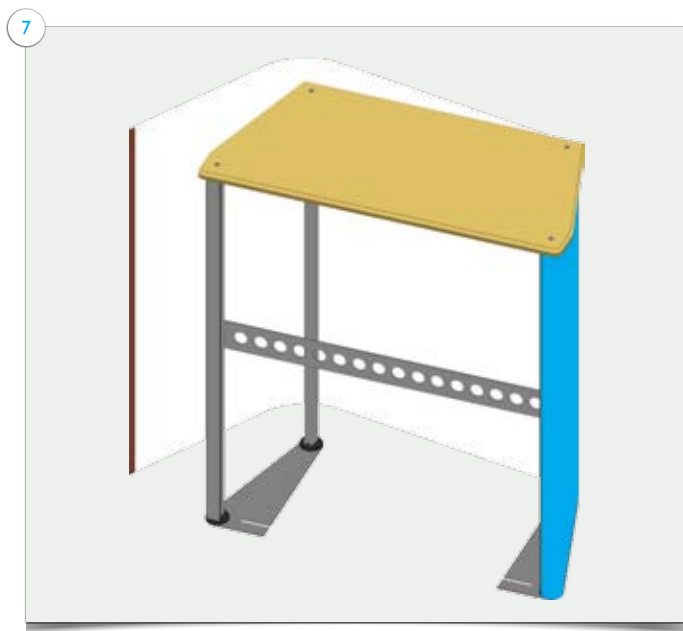
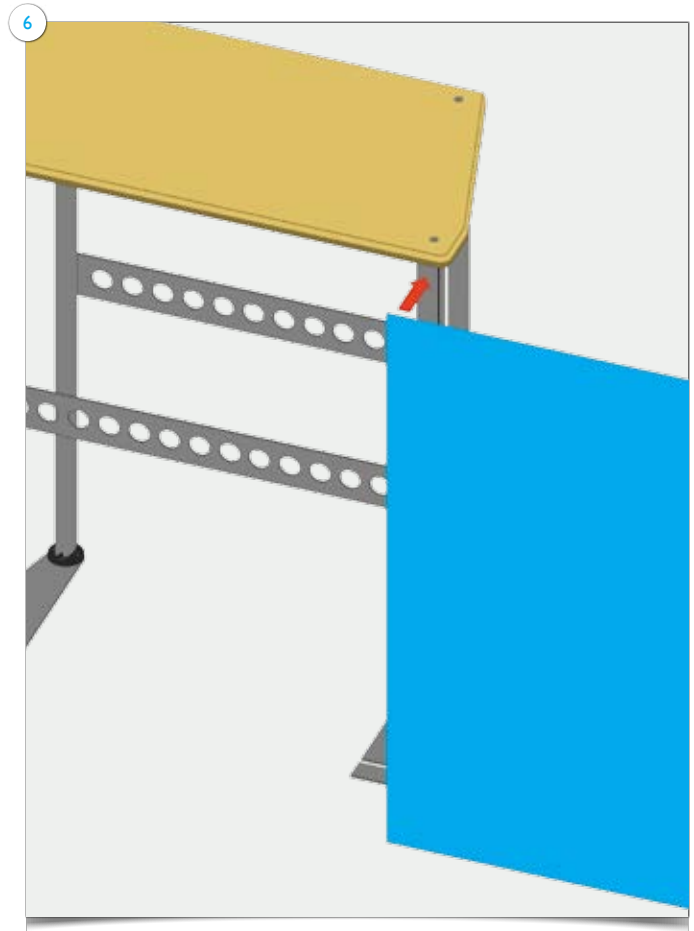
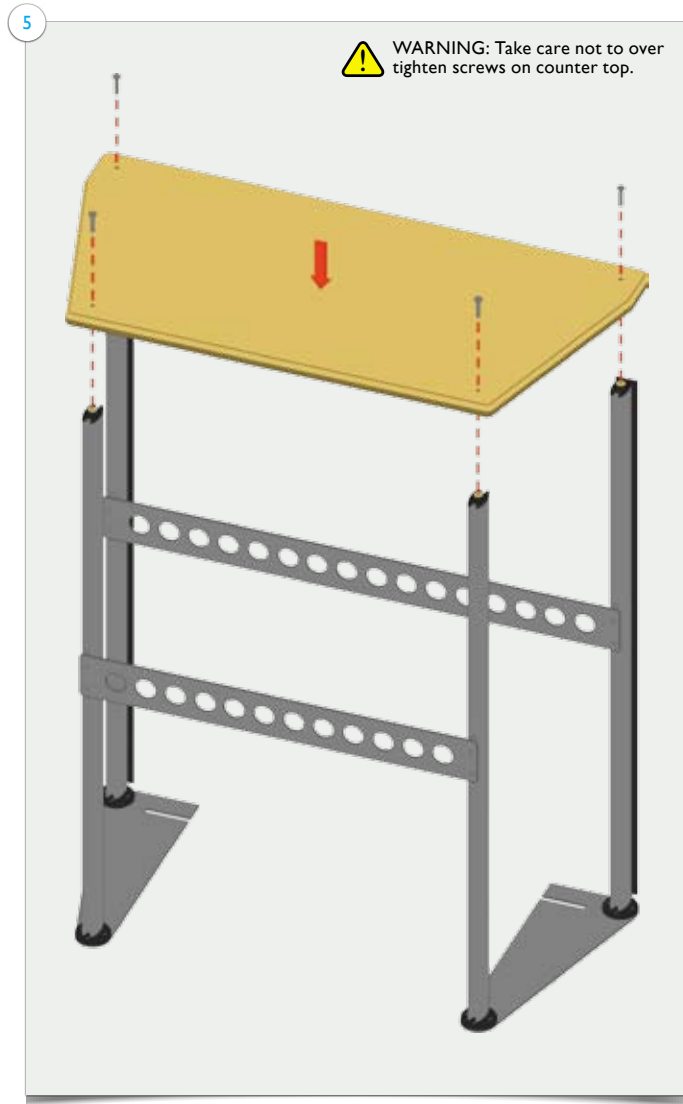


Items

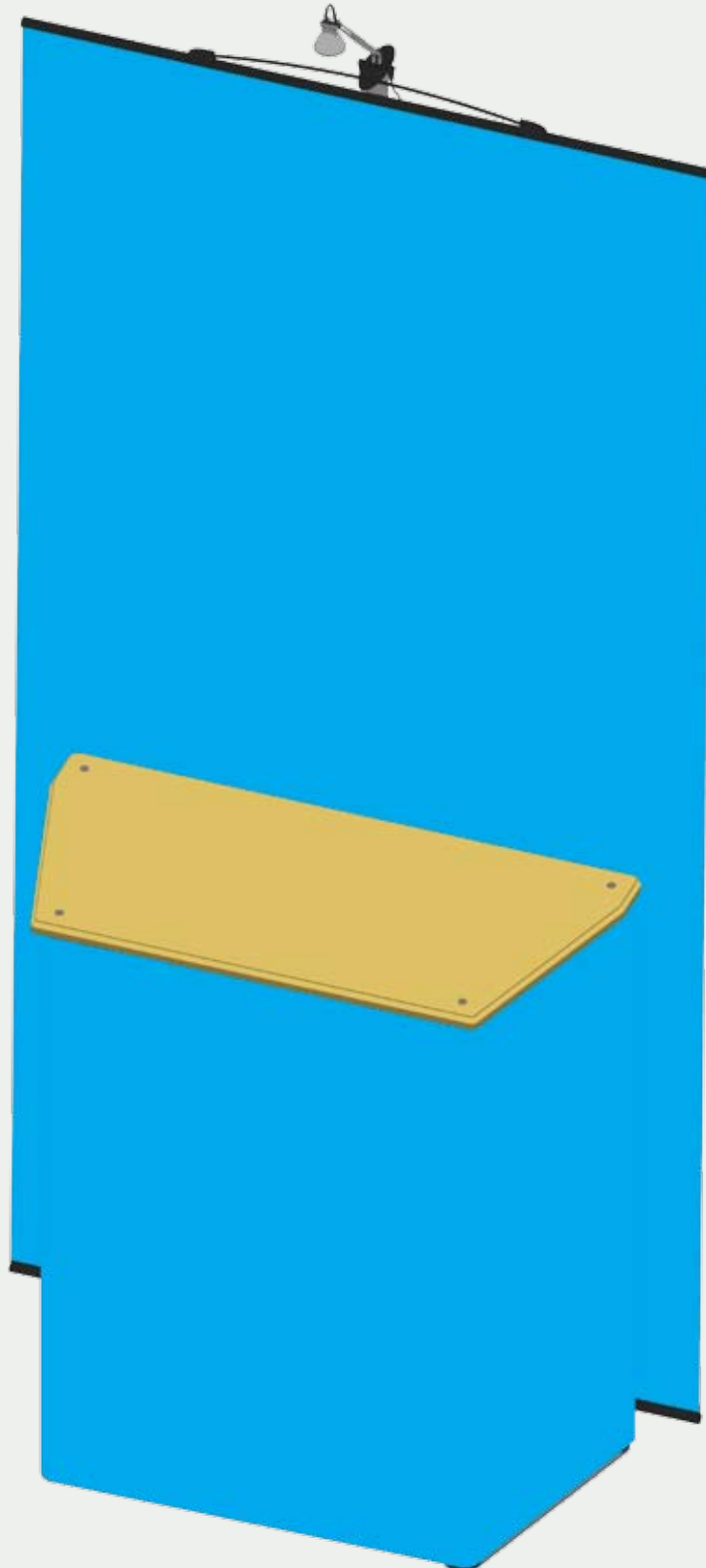
Items: 2x counter feet; 4x upright sections; 2x crossbars; 1x counter top; 4x screws; 1x Allen key; 1x counter graphic.



Part2
Counter Setup Instructions



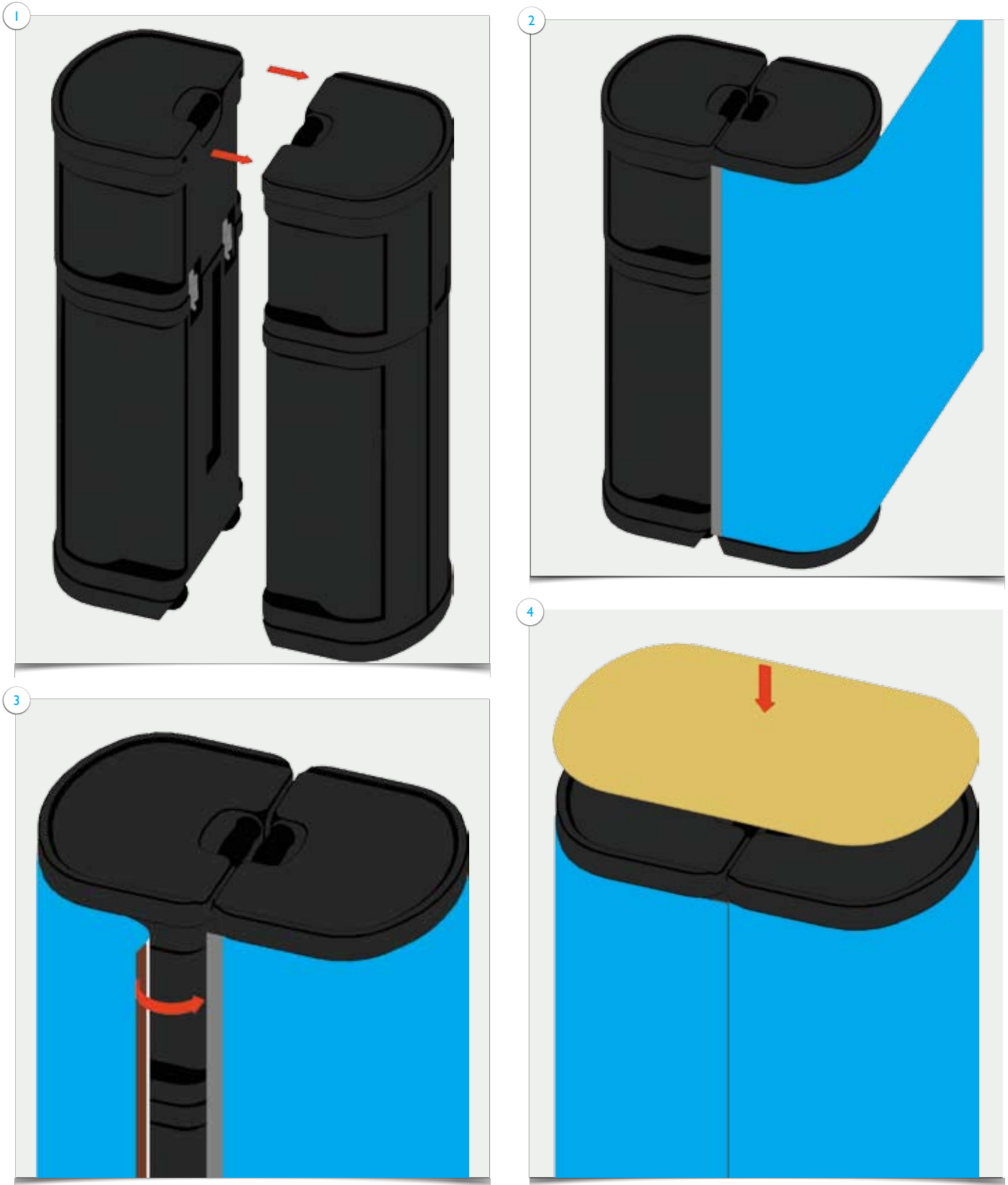
9



Double Hardcase Wrap Setup Instructions

Items

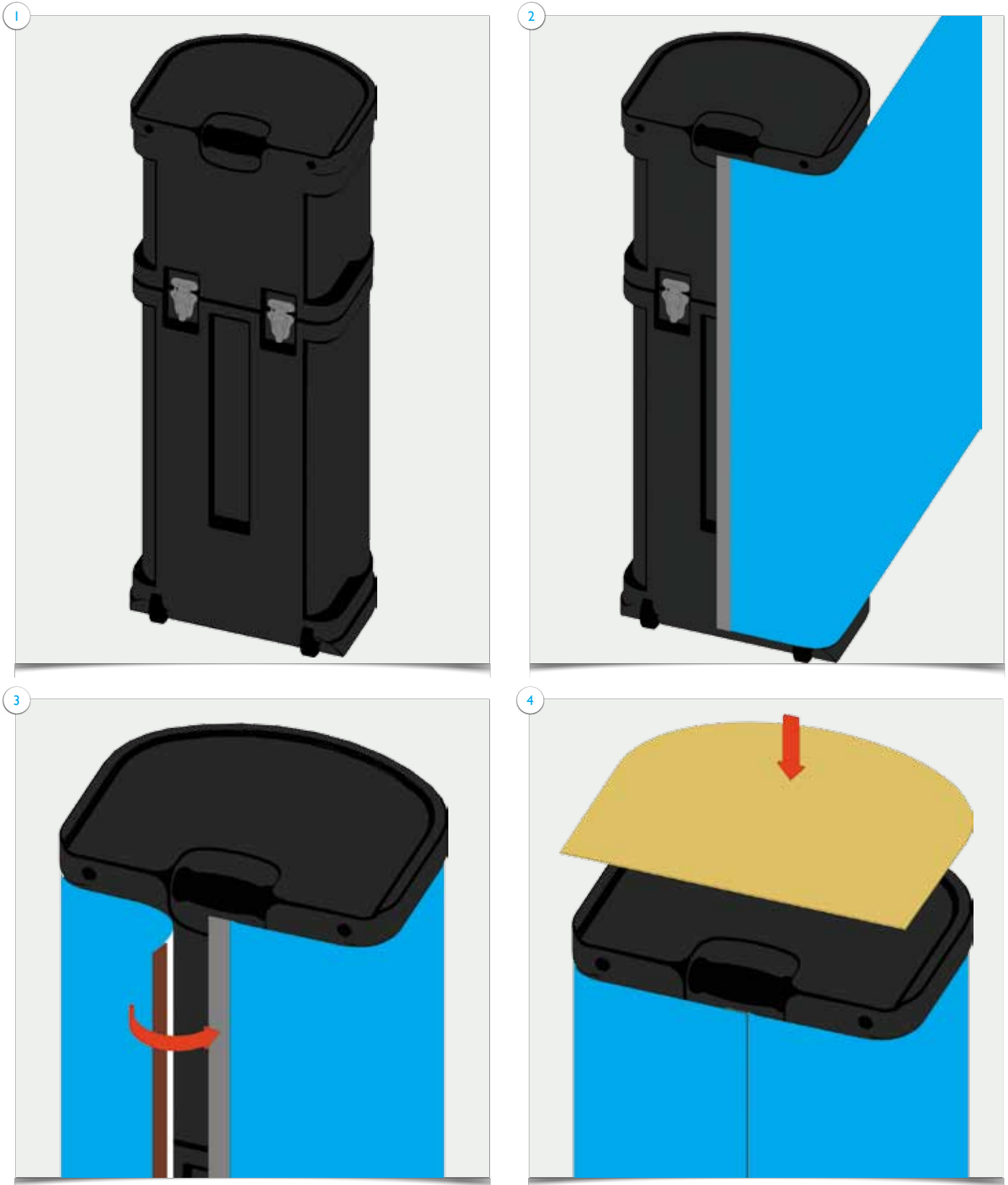
Items: 2x **Twist** hardcase; 1x graphic panel; 1x double hardcase top.



Single Hardcase Wrap Setup Instructions

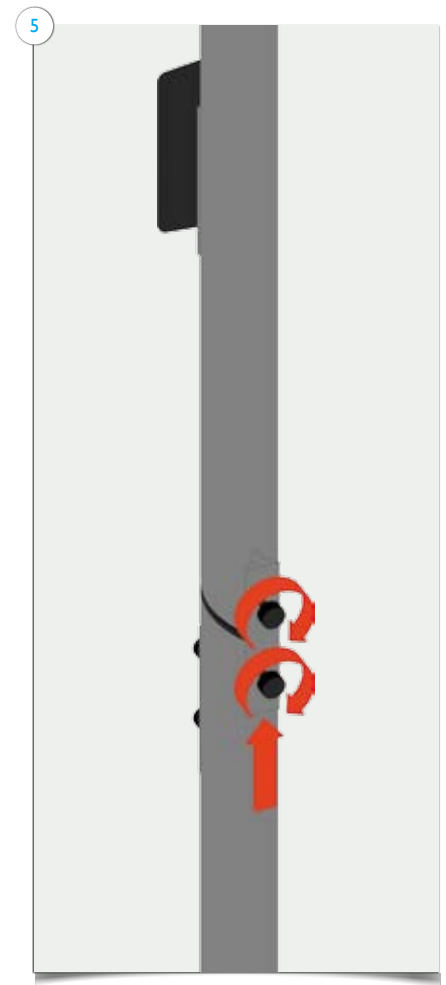
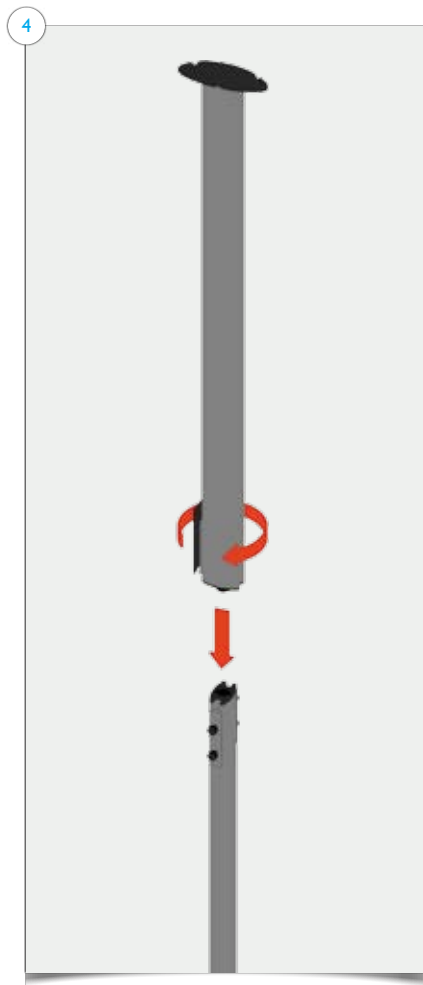
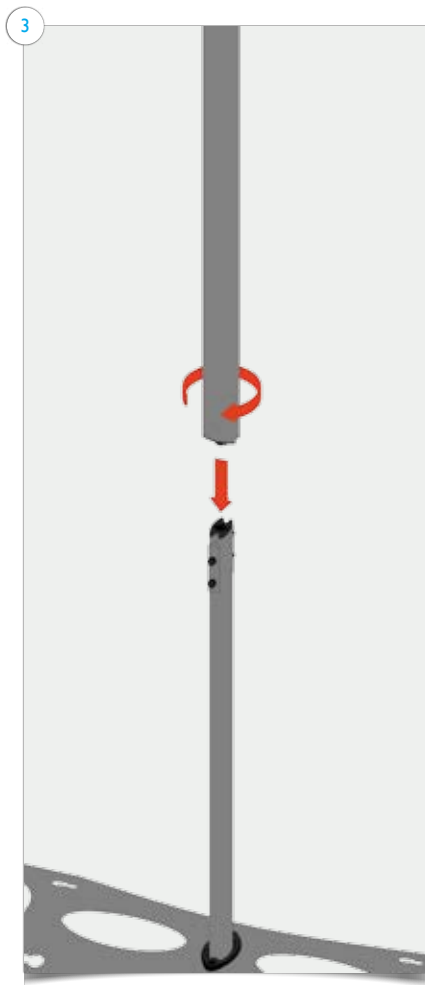
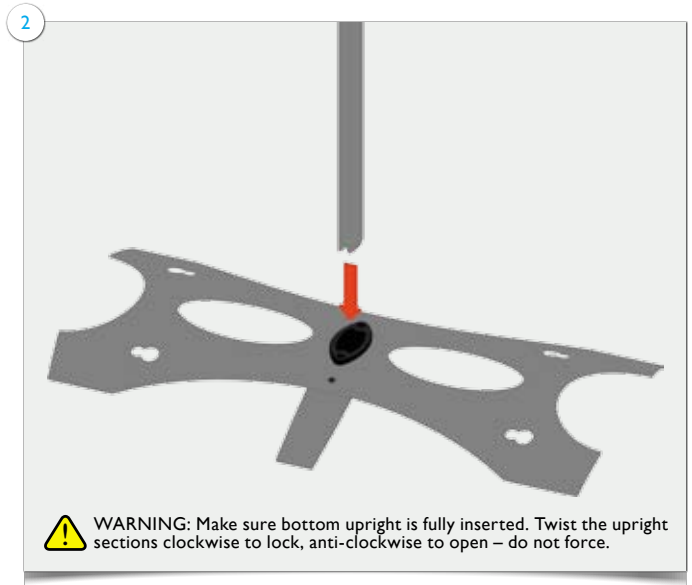
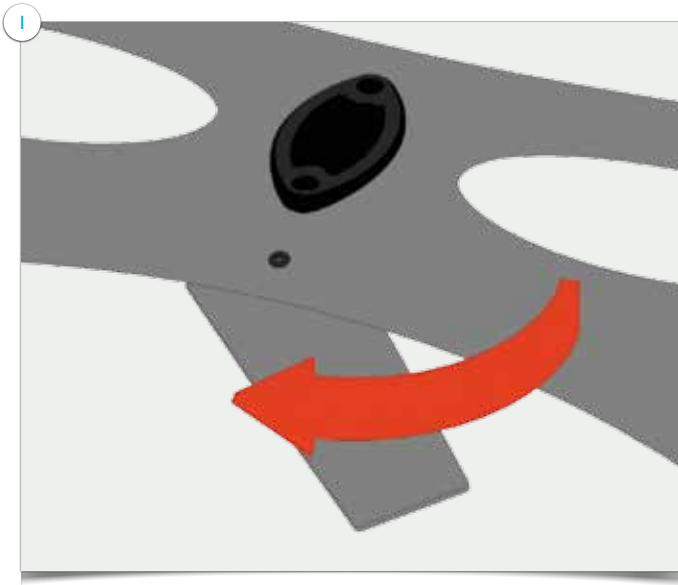
Items

Items: 1x **Twist** hardcase; 1x graphic panel; 1x single hardcase top.



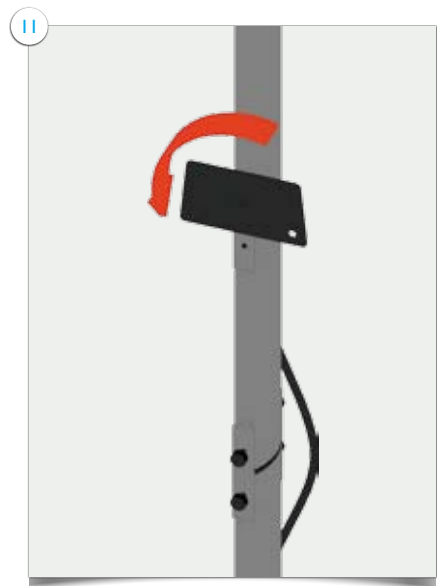
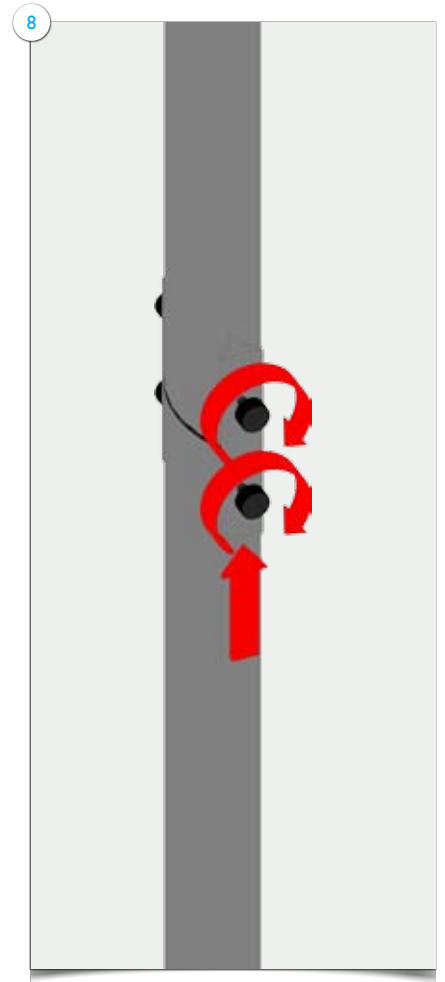
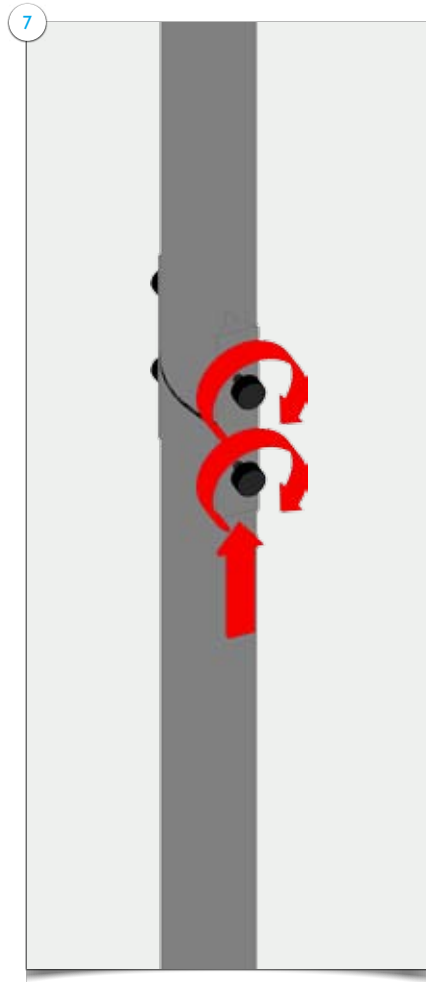
Items

Items: 1x base with stabilizing foot and grommet; 1x bottom upright section; 1x middle upright section; 1x top upright section with media bracket; 1x light; 1x transformer; 2x graphic panel with finishing strips; 2x locking pins; 1x VESA monitor mount; 4x screws; 1x Allen key.



Items

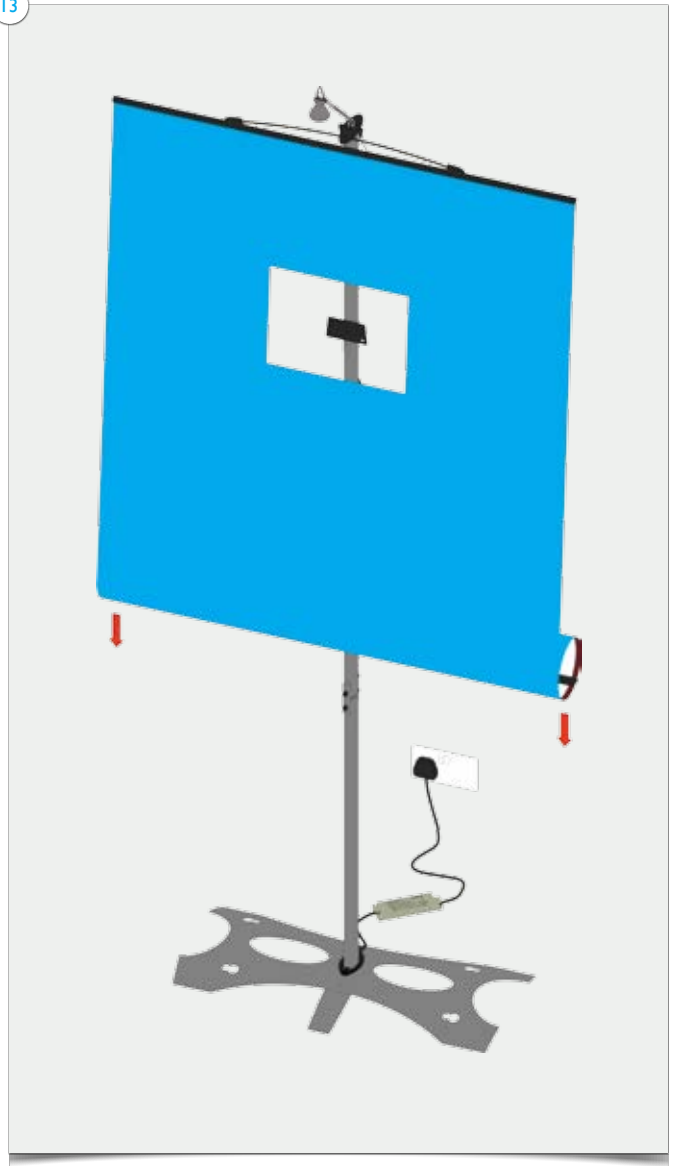
Items: 1x base with stabilizing foot and grommet; 1x bottom upright section; 1x middle upright section; 1x top upright section with media bracket; 1x light; 1x transformer; 1x graphic panel with finishing strips; 2x locking pins; 1x VESA monitor mount; 4x screws; 1x Allen key.



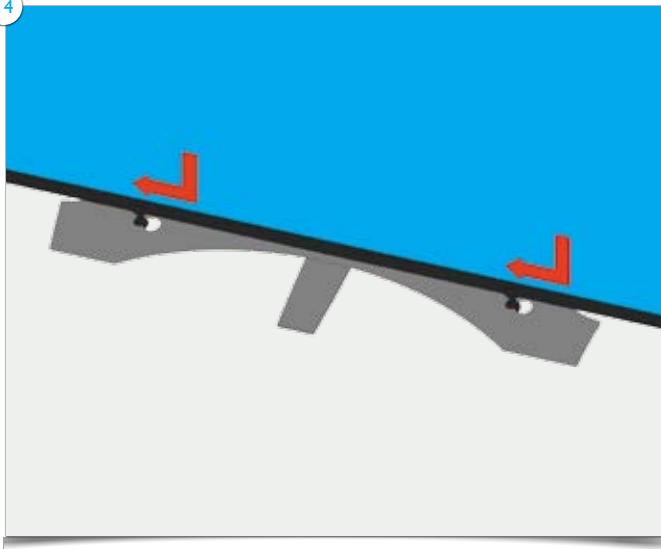
12



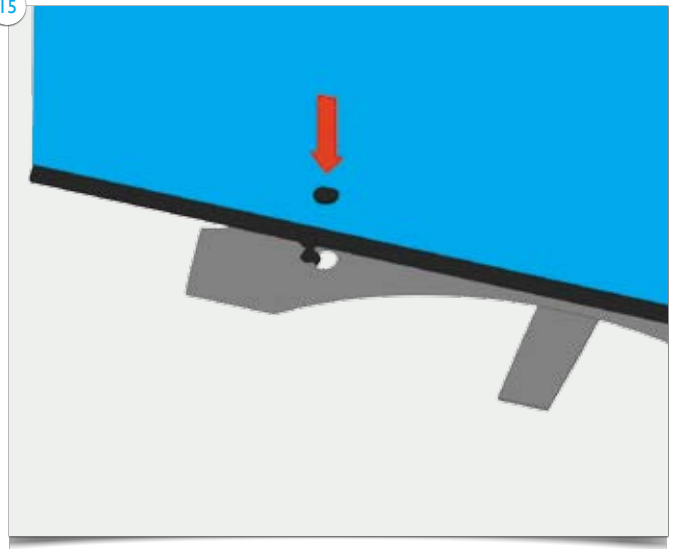
13



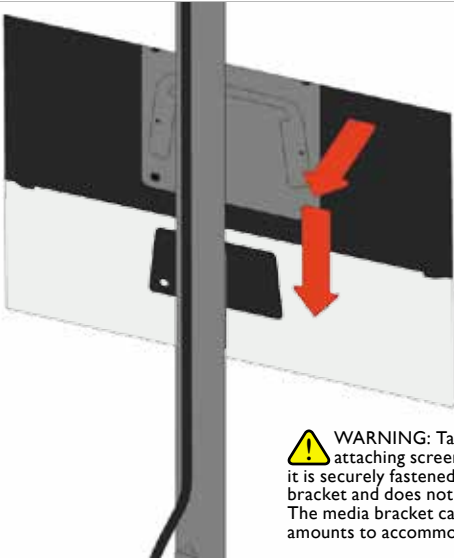
14



15



16

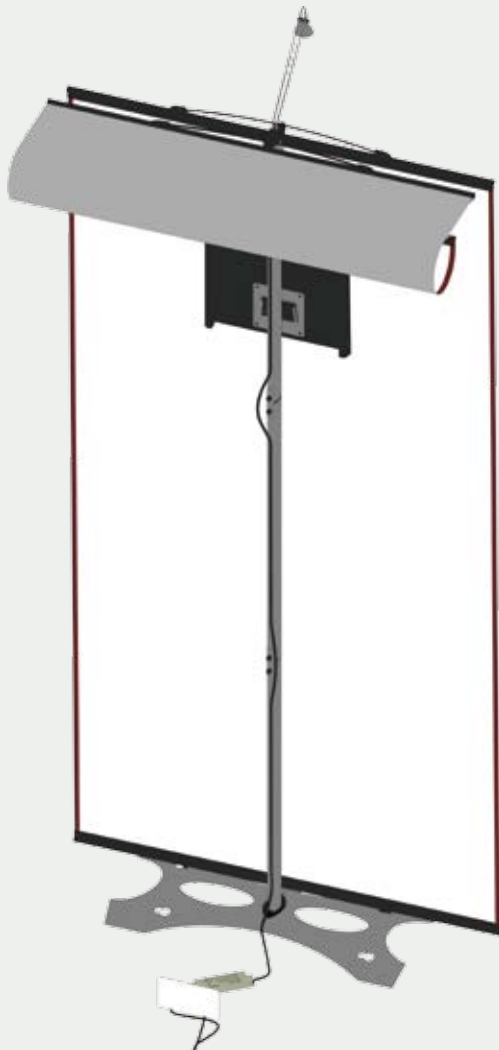


WARNING: Take care when attaching screen making sure it is securely fastened to the upright bracket and does not damage graphic. The media bracket can be moved small amounts to accommodate screen.

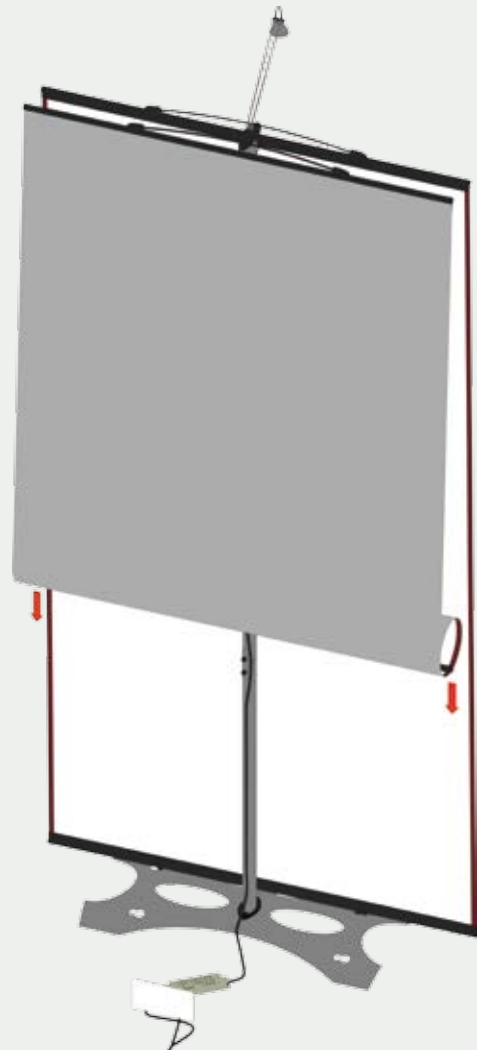
17



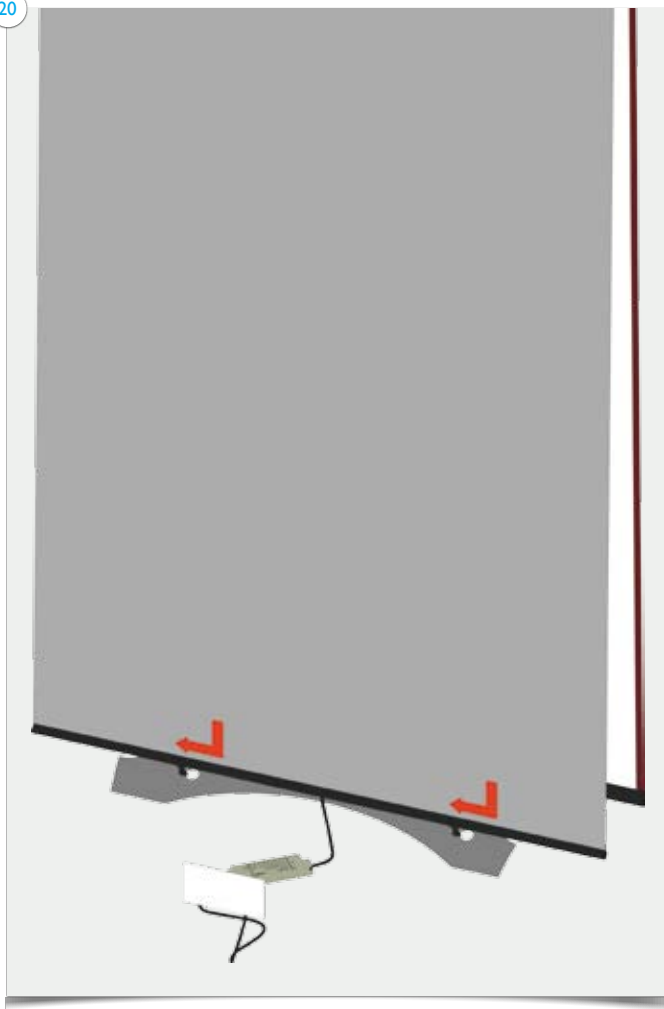
18



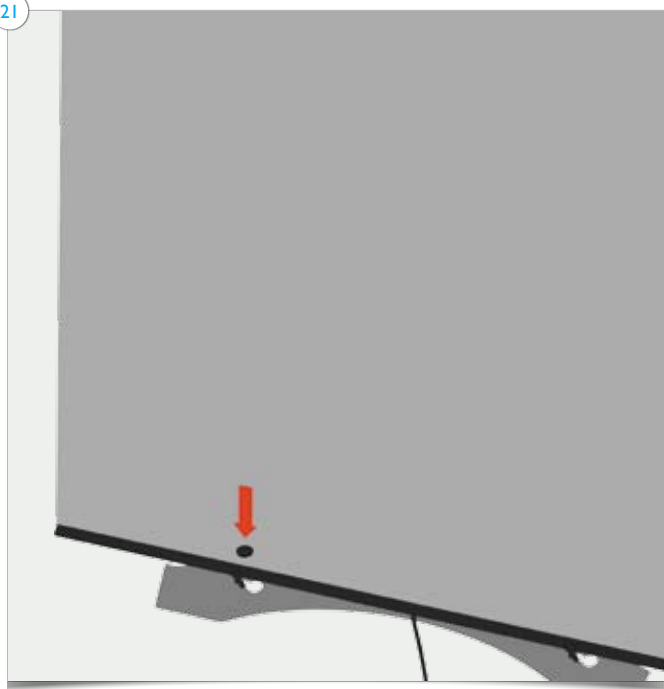
19




20

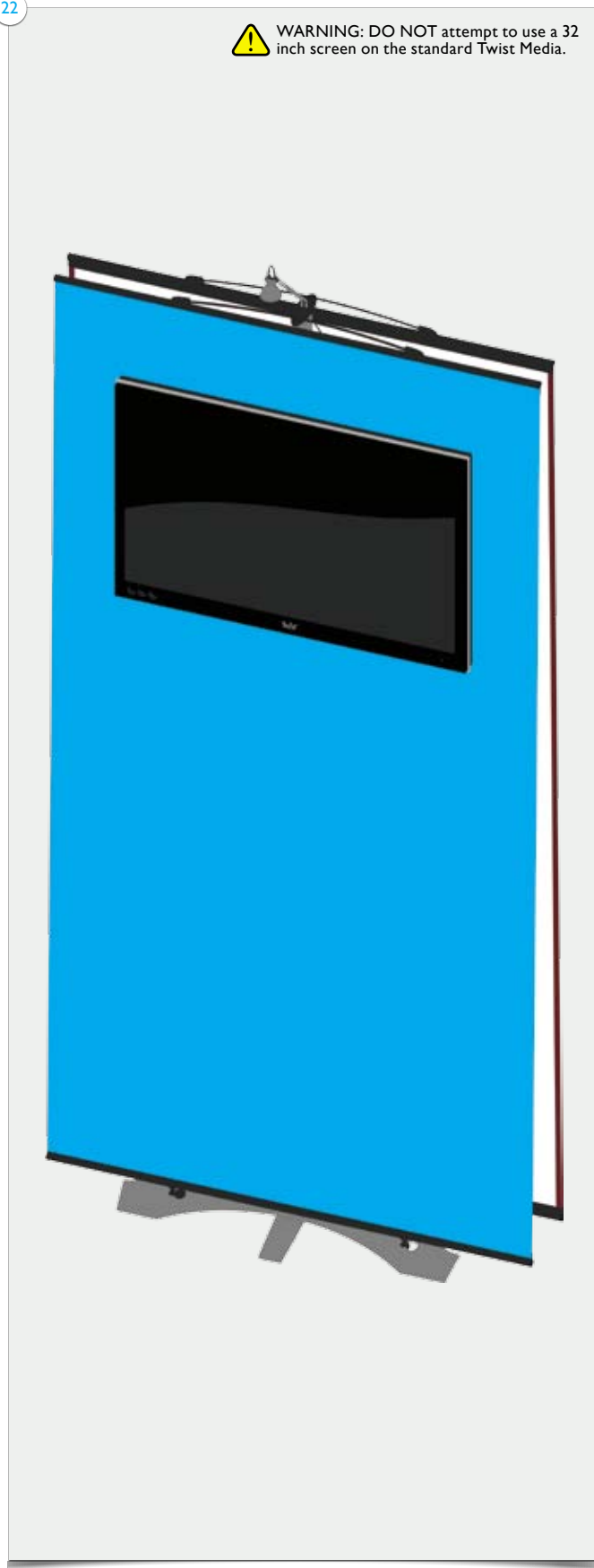


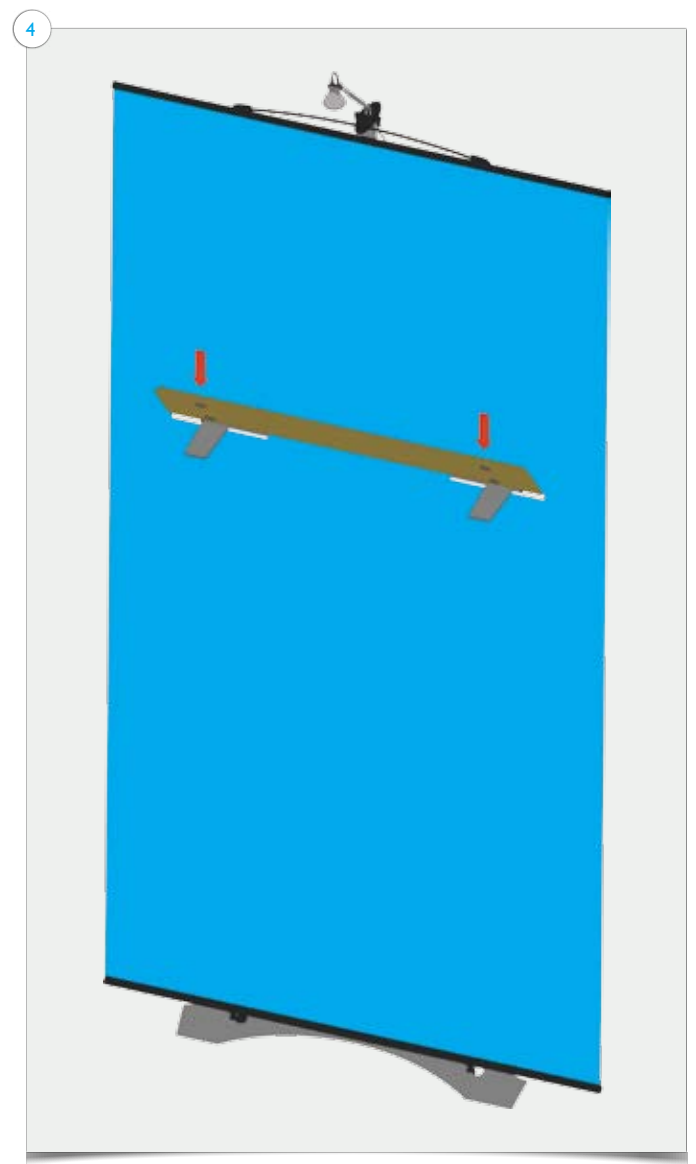
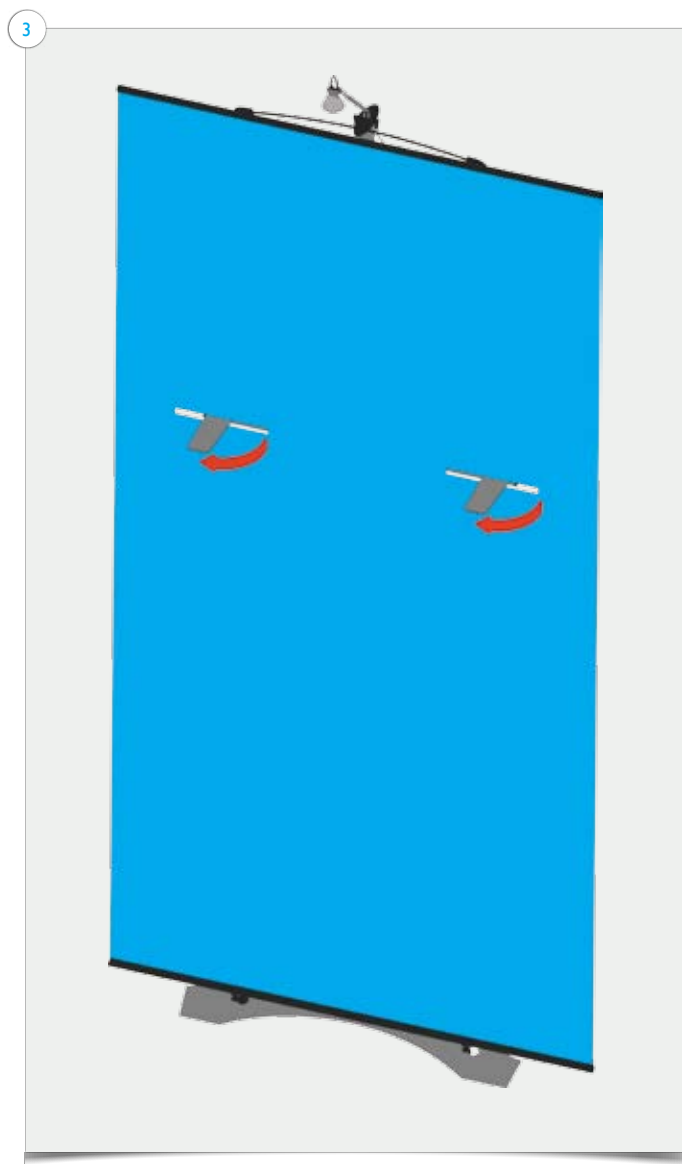
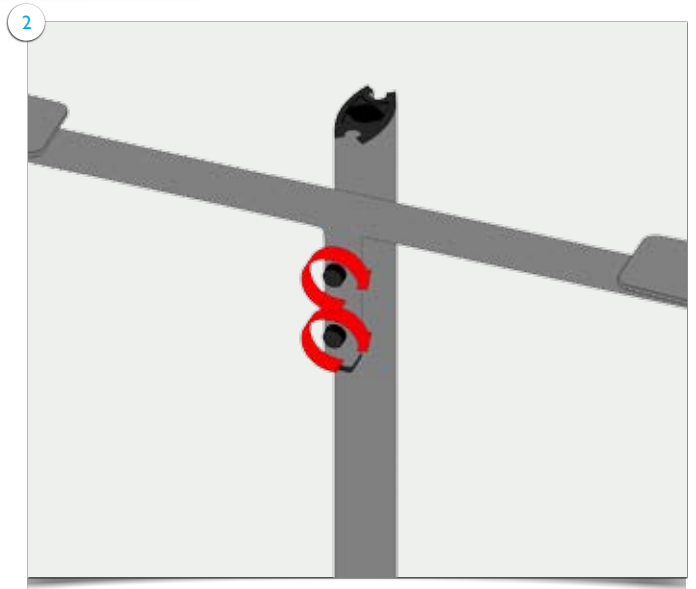
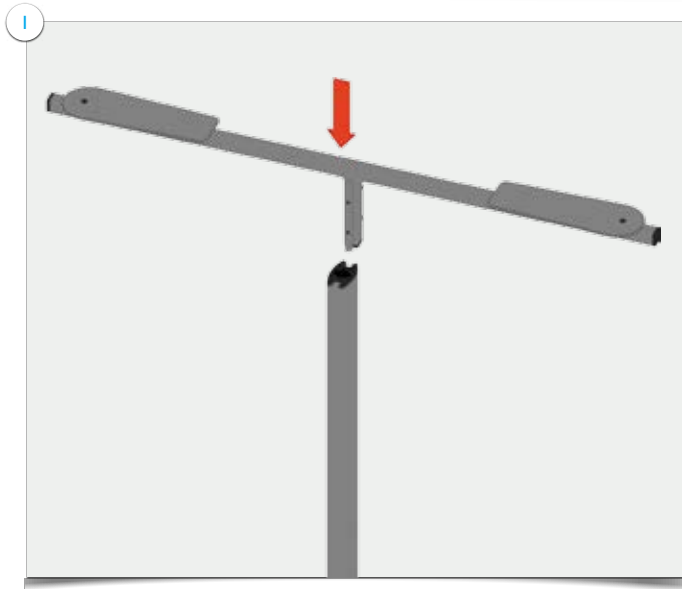
21




22

 **WARNING:** DO NOT attempt to use a 32 inch screen on the standard Twist Media.





5

 **WARNING:** There is a max load weight of 2kg per shelf and a max number of 4 shelves per stand. The maximum height of a shelf is 1.6m high.

